



## SPECIAL RELEASE

### Household Population, Number of Household, and Average Household Size in South Cotabato Province (2020 Census of Population and Housing)

Date of Release: 21 July 2022

Reference No.: 2022 SR - R1263 - 002

***Total population in South Cotabato comprises 22.36 percent of total population of SOCCSKSARGEN Region***

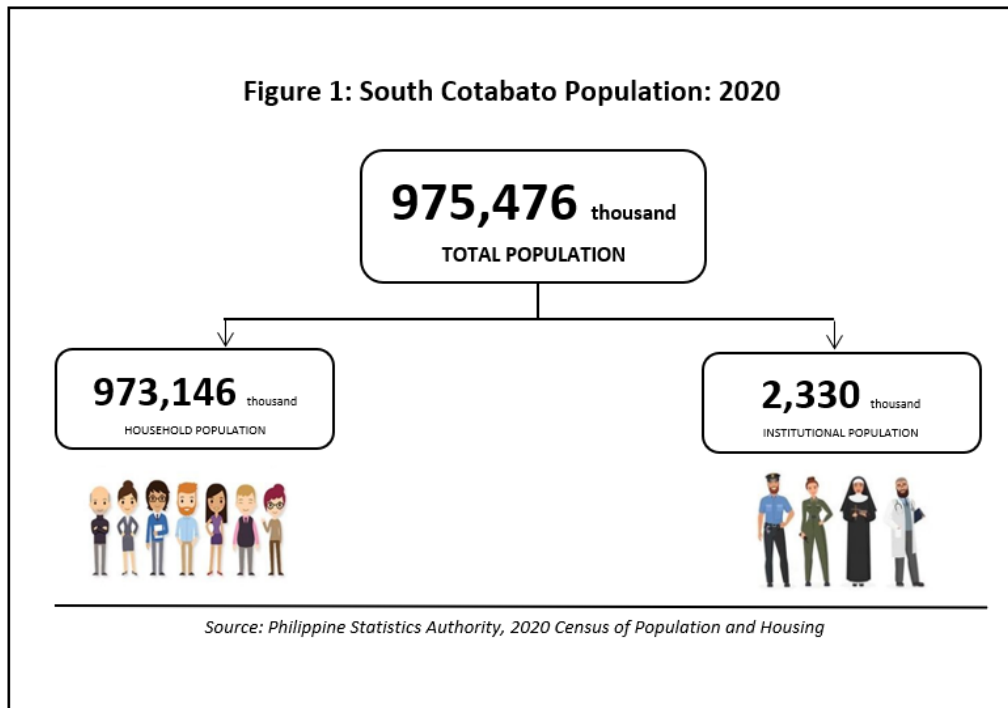
As of 01 May 2020, Region XII has a total population of 4,360,974 persons with a percentage share of 22.36 percent or a total count of 975,476 persons from South Cotabato. The household population and number of households of the province reached a total of 973,146 and 244,987, respectively (Table A).

**Table A. Total Population, Household Population, Number of Households, and Average Household Size of the Philippines, Region XII, and Province**

Philippines/Region /Province	Total Population	Household Population	Number of Households	Average Household Size
<b>Philippines</b>	<b>109,035,343</b>	<b>108,667,043</b>	<b>26,393,906</b>	<b>4.1</b>
<b>Region XII</b>	<b>4,360,974</b>	<b>4,351,773</b>	<b>1,066,453</b>	<b>4.1</b>
Cotabato	1,275,185	1,273,594	308,443	4.1
Sarangani	558,946	558,069	133,865	4.2
<b>South Cotabato</b>	<b>975,476</b>	<b>973,146</b>	<b>244,987</b>	<b>4.0</b>
City of General Santos	697,315	695,410	175,345	4.0
Sultan Kudarat	854,052	851,554	202,813	4.2

*Source: Philippine Statistics Authority, 2020 Census of Population and Housing*

Included in the total population of South Cotabato is the institutional population with a total count of 2,330 persons. These are the persons residing in collective or institutional living quarters such as hospitals, orphanages, military camps, Filipinos in Philippine embassies, consulates, and missions abroad (Figure 1).



***Household Population in South Cotabato increased by 6.59 percent from its total household population in 2015***

Total household population of South Cotabato increased by 6.59 percent to a total of 60,189 persons from 2015 Census of Population. On the other hand, an increase of 27,043 households from the 217,944 households in 2015, and 58,803 households from the census year of 2010 (Figure 1 and Table B).

**Table B. Household Population, Number of Households, and Average Household Size of City of Koronadal, By Census Year**

Census Year	Household Population	Number of Households	Average Household Size
2010	825,816	186,184	4.4
2015	912,957	217,944	4.2
2020	973,146	244,987	4.0

*Source: Philippine Statistics Authority, 2010 and 2020 Census of Population and Housing, and 2015 Census of Population*

**48 percent of the total number of households in South Cotabato belongs to City of Koronadal, Municipality of Polomolok, and T’Boli**

Among the ten (10) municipalities and one (1) component city of South Cotabato, the City of Koronadal has the greatest number of households with 50,814 in 2020. It is followed by the Municipality of Polomolok with 43,191 households, and Municipality of T’Boli with 23,993 households.

The municipality with the very least number of households is the Municipality of Santo Niño with 9,892 households (Table C).

**Table C. South Cotabato Household Population, Number of Households, and Average Household Size by City/Municipality, 2020**

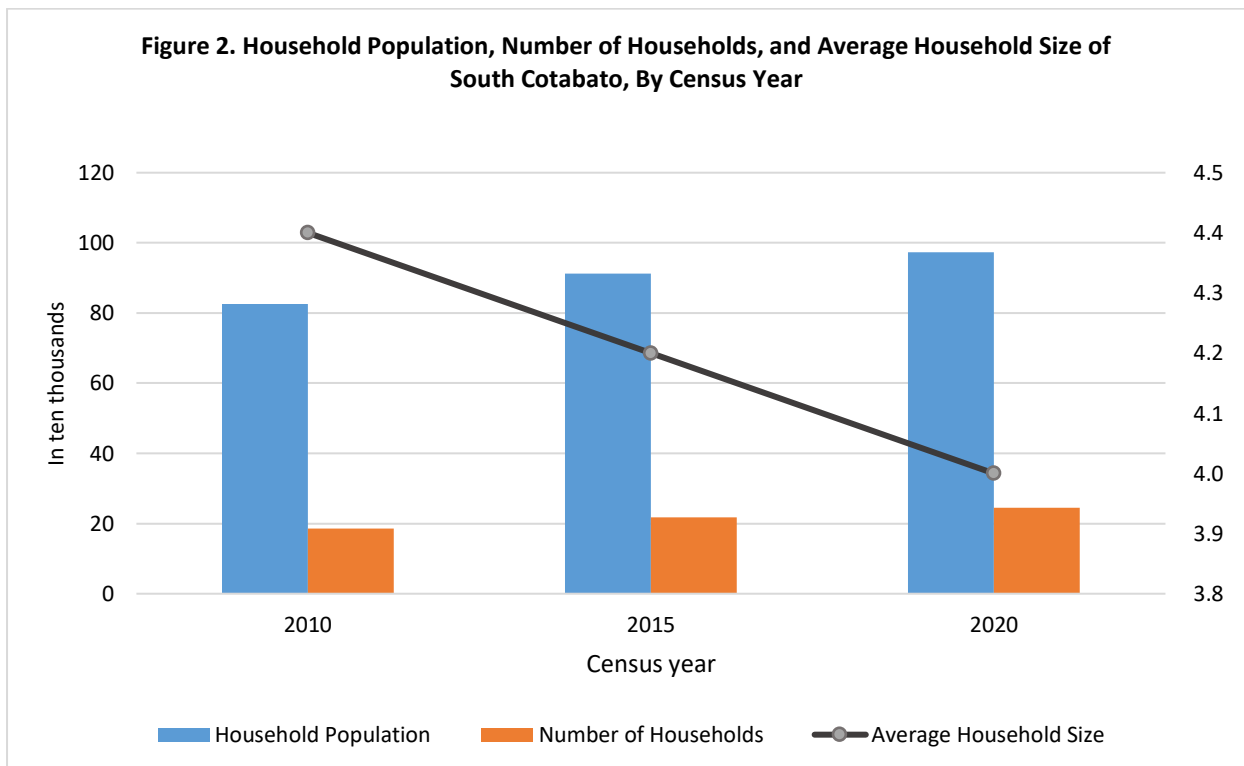
Philippines/Region /Province	Total Population	Household Population	Number of Households	Average Household Size
<b>South Cotabato</b>	<b>975,476</b>	<b>973,146</b>	<b>244,987</b>	<b>4.0</b>
Banga	89,164	89,138	23,266	3.8
City of Koronadal (Capital)	195,398	193,607	50,814	3.8
Norala	46,682	46,669	11,385	4.1
Polomolok	172,605	172,400	43,191	4.0
Surallah	89,340	89,264	22,856	3.9
Tampakan	41,018	41,018	10,472	3.9
Tantangan	45,744	45,708	11,794	3.9
T’Boli	101,049	101,024	23,993	4.2
Tupi	73,459	73,364	18,355	4.0
Santo Niño	39,796	39,795	9,892	4.0
Lake Sebu	81,221	81,159	18,969	4.3

Source: Philippine Statistics Authority, 2020 Census of Population and Housing

**Average Household size in the province declines to 4.0 persons in 2020**

Average household size in the province declined to 4.0 persons compared to the 4.2 household size in 2015, and of 4.4 in 2010. The decrease in the average size of household could be attributed to the increasing number of households as of 01 May 2020 (Figure 2).

Table C showed that among local government units (LGU), the municipality of Lake Sebu has the highest household size of 4.3, followed by T’Boli (4.2), and Norala (4.1). On the other hand, the municipality of Banga and City of Koronadal has the very least household size on the average of 3.8.



Source: Philippine Statistics Authority, 2020 Census of Population and Housing

Approved for Release:



**JILMAR F. GRECIA**  
 Chief Statistical Specialist