



REPUBLIC OF THE PHILIPPINES
PHILIPPINE STATISTICS AUTHORITY
SOCCSKSARGEN REGION

SPECIAL RELEASE

VOLUME AND VALUE OF IMPORTED AND EXPORTED GOODS, SOCCSKSARGEN REGION: JUNE 2020

Date of Release: 22 JANUARY 2021
Reference No. R12-SR2021-004

Merchandise Trade

Export sales of SOCCSKSARGEN Region in June 2020 was valued at US\$121,356,346, an increase of 48.7 percent from US\$81,634,583 recorded in June 2019. Total volume of export goods reached 105,133,870.91 kilograms during the month under review from 100,623,915.43 kilograms a year ago.

Import payments reached US\$66,914,825 in June 2020, about 32.0 percent higher from US\$50,704,819 during the same period in 2019. Imported goods totaled to 109,545,915.81 kilograms from 175,753,897.06 kilograms the previous year.

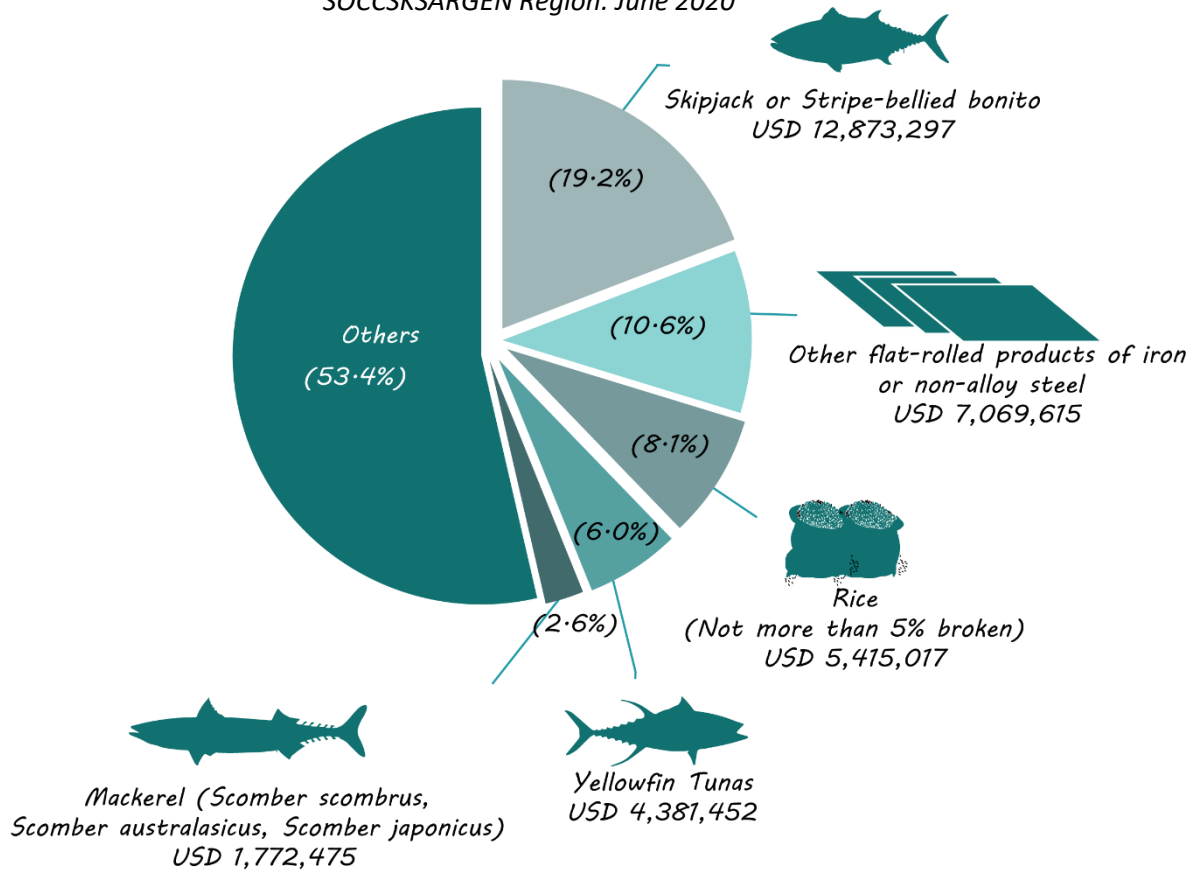
Table 1: Growth Rate and Value of Imported and Exported Goods,
SOCCSKSARGEN Region: June 2019 and 2020

	Exports		Imports	
	June 2020	June 2019	June 2020	June 2019
Free-on-Board Value	121,356,346.00	81,634,583	66,914,825	50,704,819
Year-on-year Growth Rate	48.7%		32.0%	
Volume (in kilograms)	105,133,870.91	100,623,915.43	109,545,915.81	175,753,897.06
Year-on-year Growth Rate	4.5%		-37.7%	

Import Goods

The top 5 imported commodities based on their FOB value for the month under review include *Skipjack or stripe-bellied bonito* at US\$12,873,297, constituting 19.2 percent; *Other flat-rolled products of iron or non-alloy steel* at US\$7,069,615, 10.6 percent; *Rice [Not more than 5% broken]* at US\$5,415,017, 8.1 percent; *Yellowfin Tunas* at US\$4,381,452, 6.0 percent and *Mackerel [Scomber scombrus, Scomber australasicus, Scomber japonicas]* at US\$1,772,475, 2.6 percent.

Figure 1: Distribution of Top Five (5) Imported Commodities Based on FOB Value, SOCCSKSARGEN Region: June 2020



Source: Philippine Statistics Authority

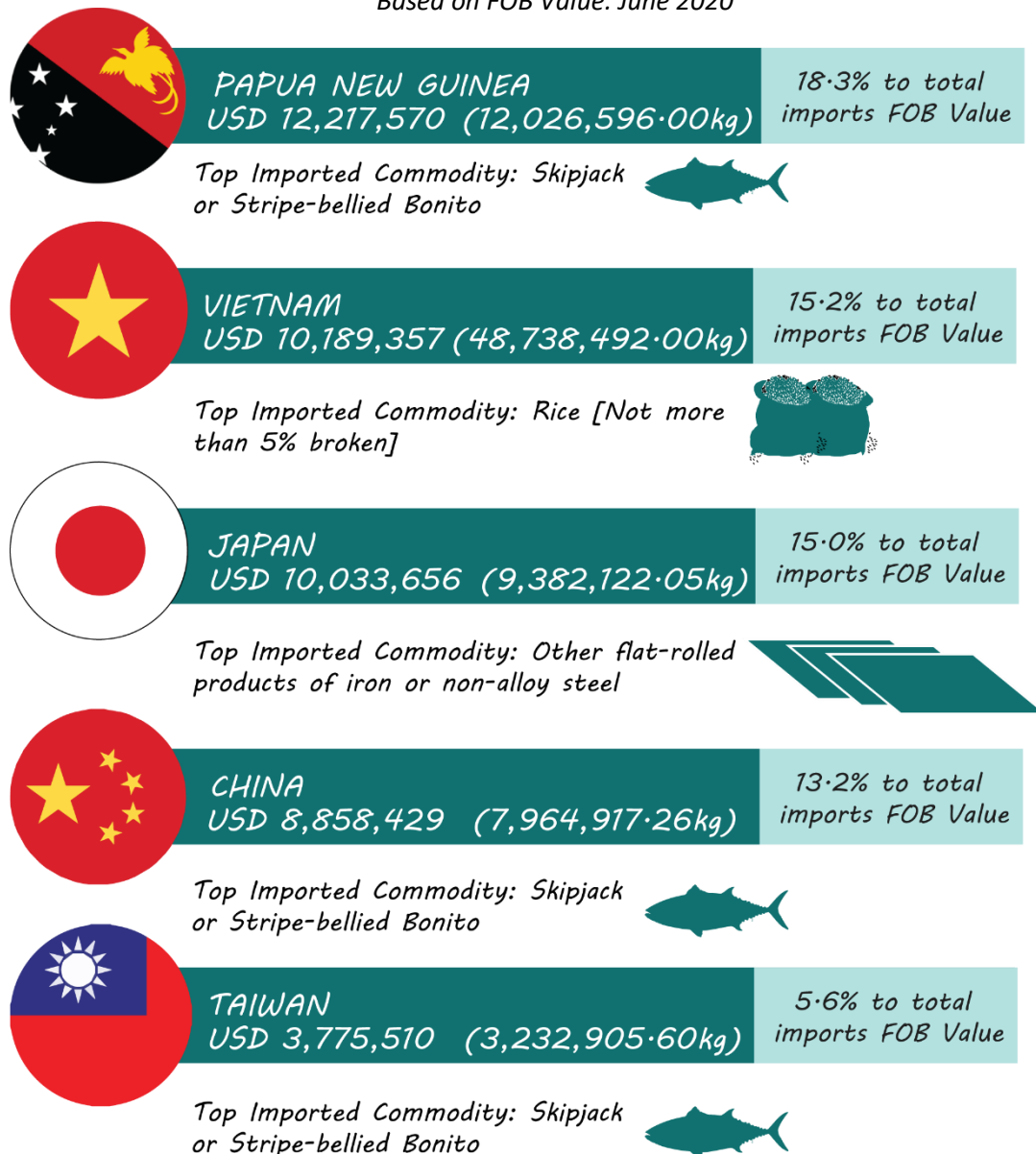
In terms of volume, the top 5 imported commodities include *Pozzolan Cement and blended pozzolan cement*, (27,112,969.00 kilograms); *Rice [Not more than 5% broken]*, (14,548,782.00 kilograms); *Skipjack or stripe-bellied bonito*, (10,220,272.40 kilograms); *Other Portland cement, aluminous cement, slag cement, supersulphate cement and similar hydraulic cements, whether or not coloured or in the form of clinkers*, (8,016,000 kilograms); *Other Flat-rolled products of iron or non-alloy steel, of a width of 600 mm or more, clad, plated or coated*, (7,236,655 kilograms).

Imported Commodities	Volume (in Kilograms)
<i>Pozzolan cement and blended pozzolan cement</i>	27,112,969.00
<i>Rice [Not more than 5% broken]</i>	14,548,782.00
<i>Skipjack or stripe-bellied bonito</i>	10,220,272.40
<i>Other Portland cement, aluminous cement, slag cement, supersulphate cement and similar hydraulic cements, whether or not coloured or in the form of clinkers</i>	8,016,000.00
<i>Other Flat-rolled products of iron or non-alloy steel, of a width of 600 mm or more, clad, plated or coated</i>	7,236,655.00

Import payments to *Papua New Guinea* totaled to US\$12,217,570 which accounted for 18.3 percent of the total value of goods imported by SOCCSKSARGEN Region in June 2020. *Vietnam* was next at US\$10,189,357; *Japan*, US\$10,033,656; *China*, US\$8,858,429; and *Taiwan*, US\$3,775,510.

Skipjack or stripe-bellied bonito was the top import goods in terms of value from *Papua New Guinea, China and Taiwan* while *Rice [Not more than 5% broken]* and *Other flat-rolled products of iron or non-alloy steel* was the highest import goods for *Vietnam and Japan*, respectively.

Figure 2: Top Five (5) Source Countries for SOCCSKSARGEN Region's Imports,
Based on FOB Value: June 2020



Source: Philippine Statistics Authority

4/F CYMCI Building, Don Rufino Alonzo St., Cotabato City 9600

Telefax: (064) 421-2827, Telephone: (064) 557-2416

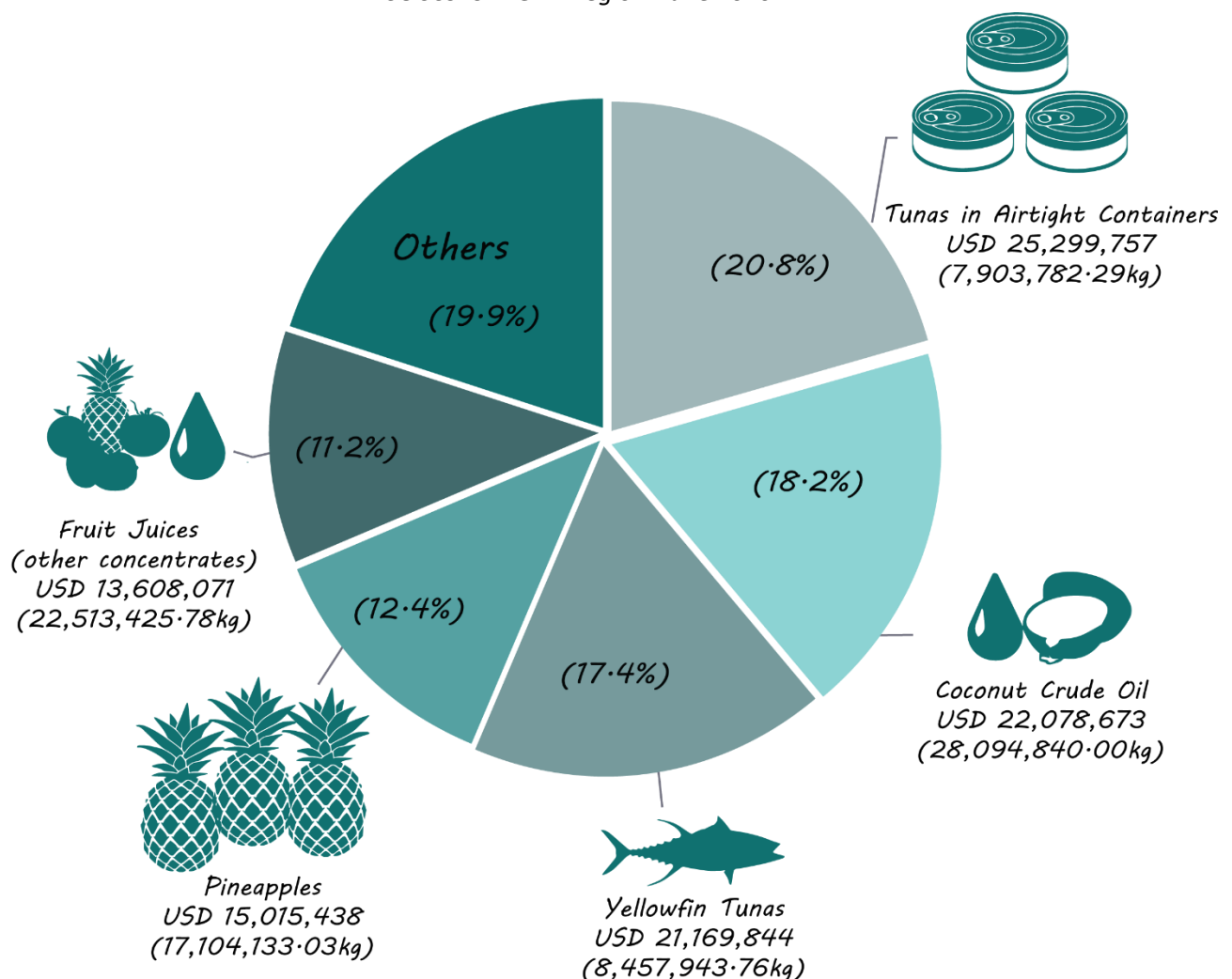
E-mail: psadose@gmail.com

<https://rso12.psa.gov.ph>

Export Goods

The top 5 export commodities in terms of FOB value include *Tunas (in airtight containers)*, *Coconut Crude Oil*, *Yellowfin tunas*, *Pineapples*, and *Fruit Juices (Other Concentrates)*. Export sales for *Tunas (in airtight containers)* reached US\$25,299,757 with a gross weight of 7,903,782.29 kilograms. It was followed by *Coconut Crude Oil* at US\$22,078,673; *Yellowfin Tunas*, US\$21,169,844; *Pineapples*, US\$15,015,438, and *Fruit Juices (Other Concentrates)*, US\$13,608,071.

Figure 3: Distribution of Top Five (5) Exported Commodities Based on FOB Value
SOCCSKSARGEN Region: June 2020

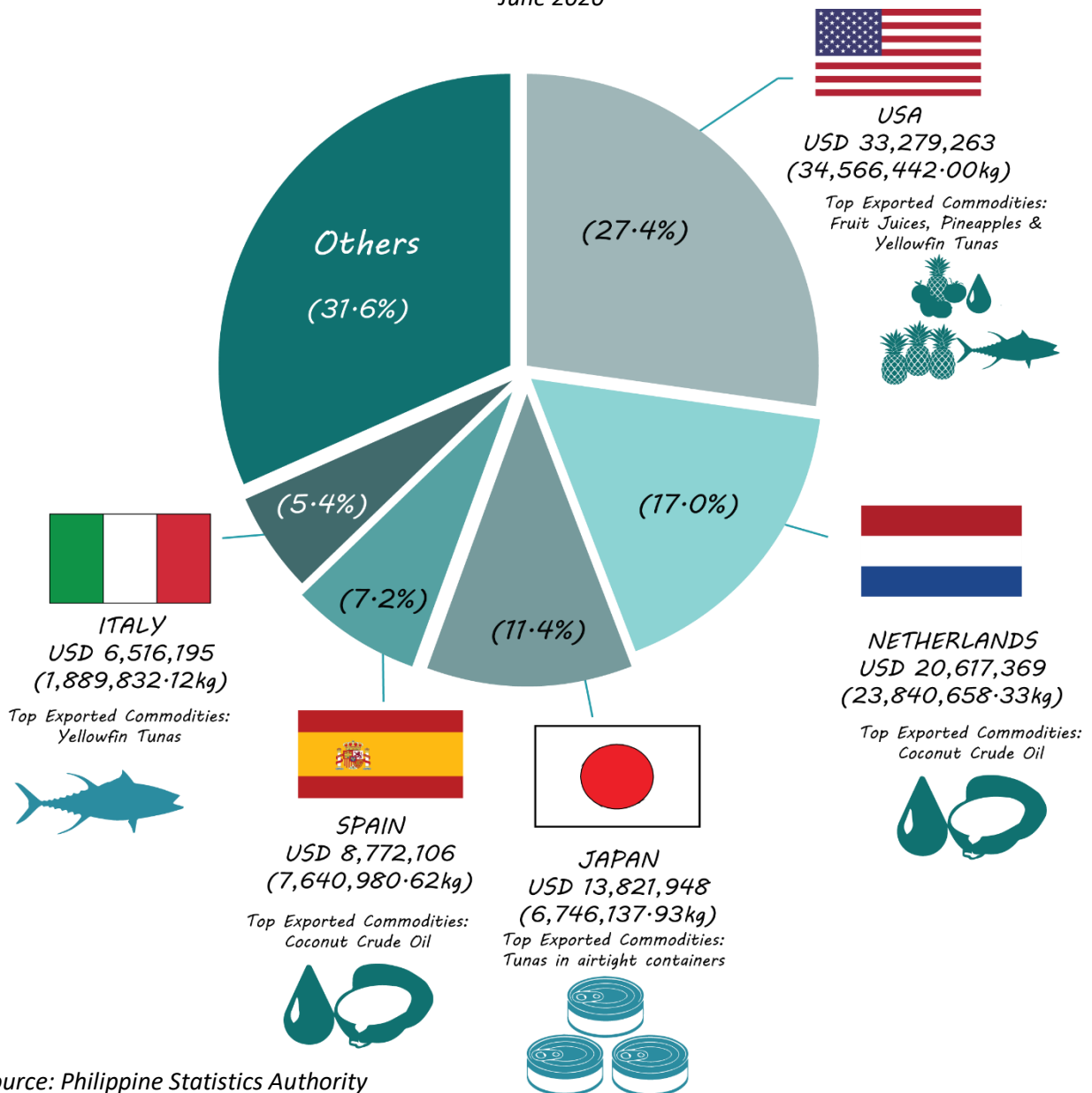


Source: Philippine Statistics Authority

At US\$33,279,263, the *United States of America* (USA) is the top destination of SOCCSKSARGEN Region's export goods weighing 34,566,442.00 kilograms. *Netherlands* was next at US\$20,617,369; *Japan*, US\$13,821,948; *Spain*, US\$8,772,106; and *Italy*, US\$6,516,195.

The top commodities exported to USA include Fruit and Vegetable Juices (Concentrates), Pineapples and Yellowfin Tunas. In Netherlands, Coconut Crude Oil; Japan, Tunas (in airtight containers); Coconut Crude Oil for Spain and Yellowfin Tunas for Italy.

Figure 4: Top Five (5) Destination Countries for SOCCSKSARGEN Region's Exports Based on FOB Value June 2020



Source: Philippine Statistics Authority



REPUBLIC OF THE PHILIPPINES
PHILIPPINE STATISTICS AUTHORITY
SOCCKSARGEN REGION

Approved for Release:

ATTY. MAQT/AHAR L. MANULON, CESO V
Regional Director

For inquiries, please contact:

MA. EILEEN A. BERDEPRADO/CYREX BOY V. QUITIOL
Statistical Operations and Coordination Division, PSA-RSSO XII
Telephone Number (064) 557-2416