



REPUBLIC OF THE PHILIPPINES
PHILIPPINE STATISTICS AUTHORITY
SOCCSKSARGEN REGION

SPECIAL RELEASE

VOLUME AND VALUE OF IMPORTED AND EXPORTED GOODS, SOCCSKSARGEN REGION: SEPTEMBER 2020

Date of Release: 03 MARCH 2021

Reference No. R12-SR2021-011

Merchandise Trade

SOCCSKSARGEN Region's export income in September 2020 went up by 18.3 percent at US\$85,513,501 from US\$72,255,428 in September 2019. The total volume of export commodities weighed 61,129,352 kilograms during the month under review from 51,662,186 kilograms recorded in the same month of the previous year.

Import expenditures, at US\$54,971,423, went down by 17.0 percent from US\$66,239,309 in the same month of 2019. Imported goods reached a total of 197,551,996 kilograms from 175,999,001 kilograms in September 2019.

Table 1: Volume and Value of Imported and Exported Goods,
SOCCSKSARGEN Region: September 2019 and 2020

	Imports		Exports	
	September 2020	September 2019	September 2020	September 2019
Free-on-Board (FOB) Value (in USD)	54,971,423	66,239,309	85,513,501	72,255,428
Year-on-year Growth Rate	-17.0%		18.3%	
Volume (in kilograms)	197,551,996	175,999,001	61,129,352	51,662,186
Year-on-year Growth Rate	12.2%		18.3%	

Source: Philippine Statistics Authority

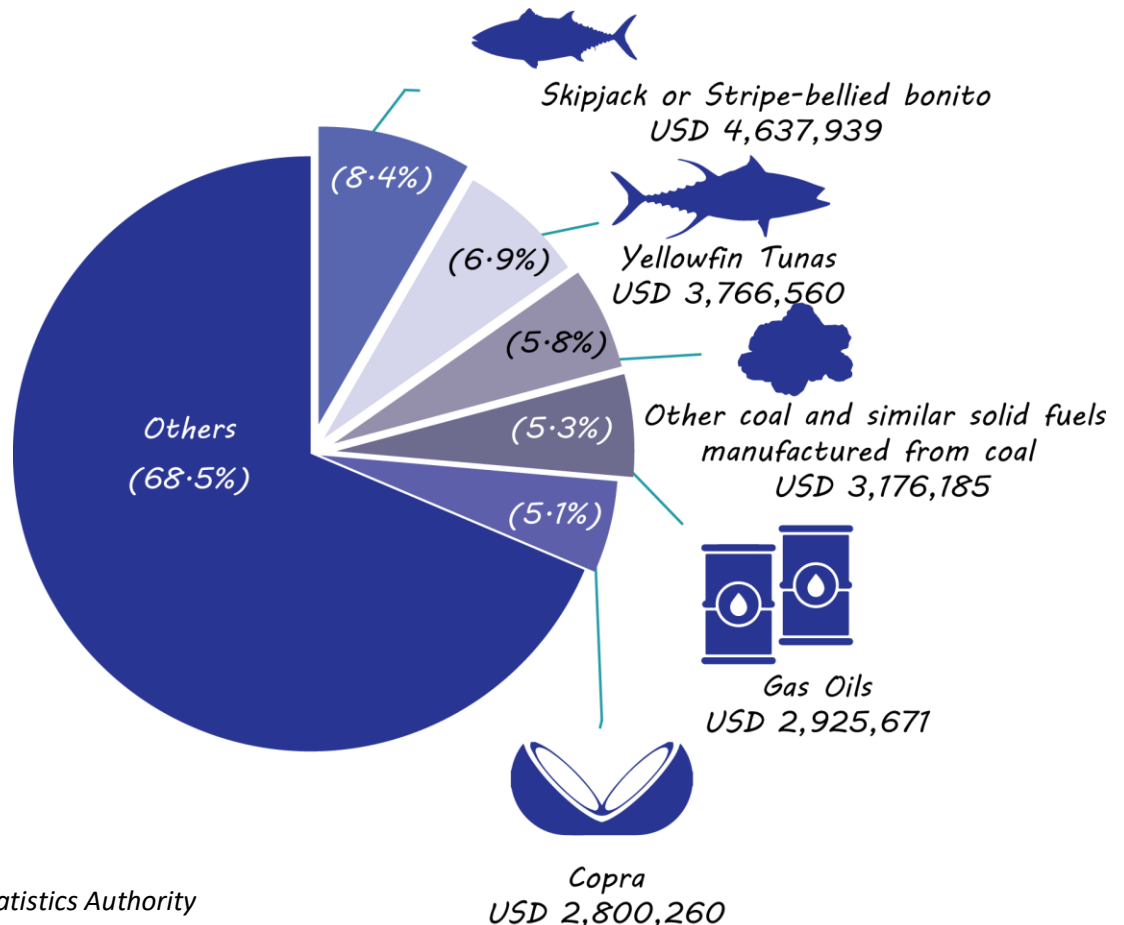
Import Goods

Among the imported commodities, *Skipjack or stripe-bellied bonito* accounted the highest imports expenditures at US\$4,637,939 or 8.4 percent of the total payments for imports in terms of Free-On-Board (FOB) value in SOCCSKSARGEN Region in September 2020. *Yellowfin Tunas* followed at 6.9 percent, (US\$3,766,560); *Other coal and similar solid fuels manufactured from coal*, (US\$3,176,185) at 5.8 percent; *Gas Oils*, (US\$2,800,260) at 5.3 percent; and *Copra*, (US\$2,800,260) at 5.1 percent



4/F CYMCI Building, Don Rufino Alonzo St., Cotabato City 9600
Telefax: (064) 421-2827, Telephone: (064) 557-2416
E-mail: psadose@gmail.com
<https://rsso12.psa.gov.ph>

Figure 1: Distribution of Top Five (5) Imported Commodities Based on FOB Value, SOCCSKSARGEN Region: September 2020



Source: Philippine Statistics Authority

The top 5 imported commodities based on volume include *Other Coal [briquettes, ovoids and similar solid fuels manufactured from coal]*, (62,358,520 kilograms); *Other Portland cement, aluminous cement, slag cement, supersulphate cement and similar hydraulic cements [whether or not coloured or in the form of clinkers]*, (49,075,280 kilograms); *Pozzolan Cement and blended pozzolan cement*, (14,071,490 kilograms); *Gas Oils*, (8,774,350 kilograms); and *Copra*, (6,281,073 kilogram).

Table 2: Top 5 Imported Commodities Based on Volume

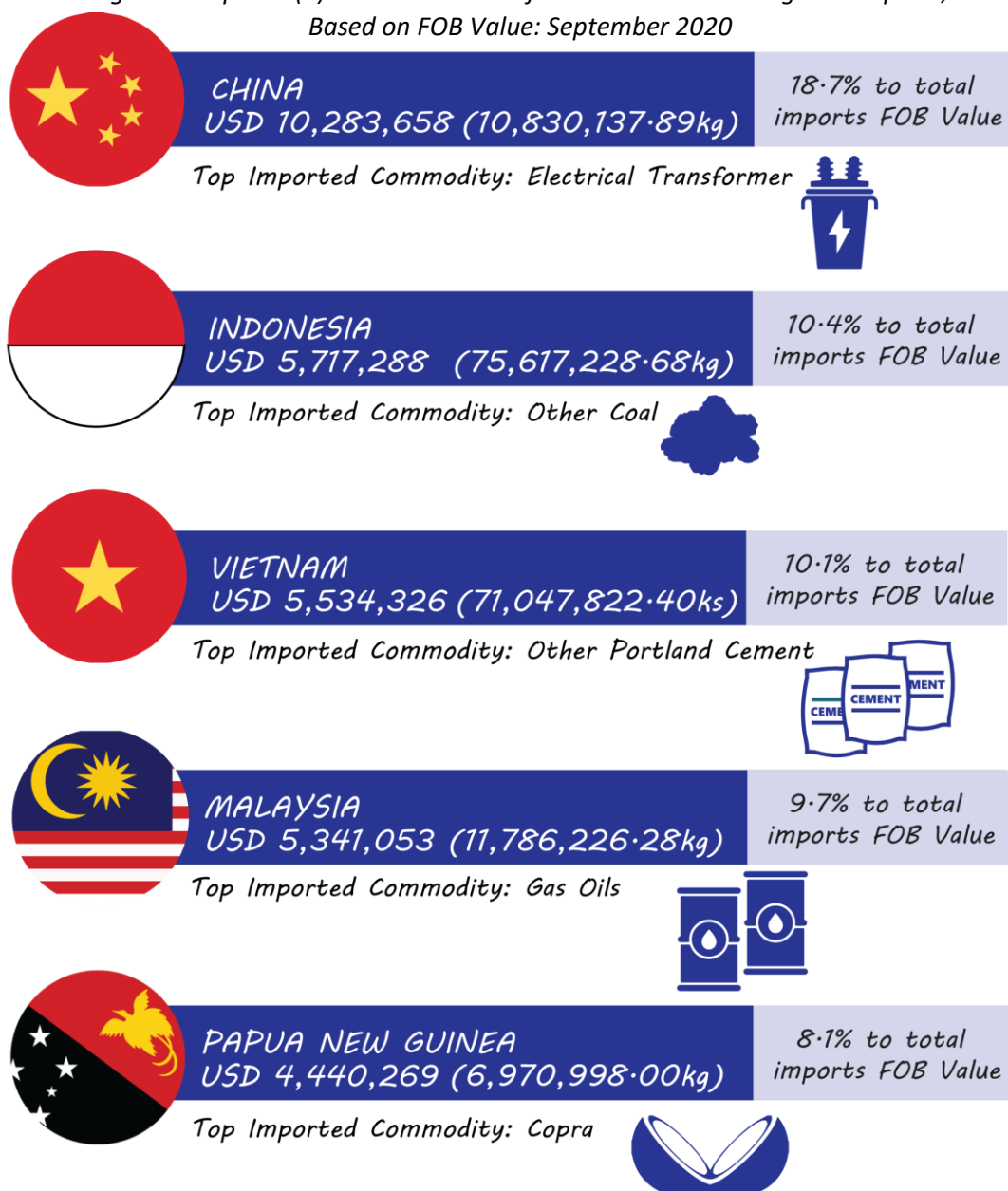
Imported Commodities	Volume (in Kilograms)
<i>Other coal</i>	62,358,520.0
<i>Other Portland Cement</i>	49,075,280.0
<i>Pozzolan cement and blended pozzolan cement</i>	14,071,490.0
<i>Gas oils</i>	8,774,350.0
<i>Copra</i>	6,281,073.0



China was the region's biggest supplier of imported goods amounting to US\$10,283,658 in September 2020 accounting for 18.7% of the total import value of the region. Indonesia was second at US\$5,717,288 (10.4%); Vietnam at US\$5,534,326 (10.1%); Malaysia at US\$5,341,053 (9.7%); and Papua New Guinea at US\$4,440,269 (8.1%).

The top import goods from *China* in terms of FOB value was *Electrical Transformer*. From *Indonesia*, *Other Coal*; *Vietnam*, *Other Portland Cement*; *Malaysia*, *Gas Oils*; and *Papua New Guinea*, *Copra*.

Figure 2: Top Five (5) Source Countries for SOCCSKSARGEN Region's Imports, Based on FOB Value: September 2020



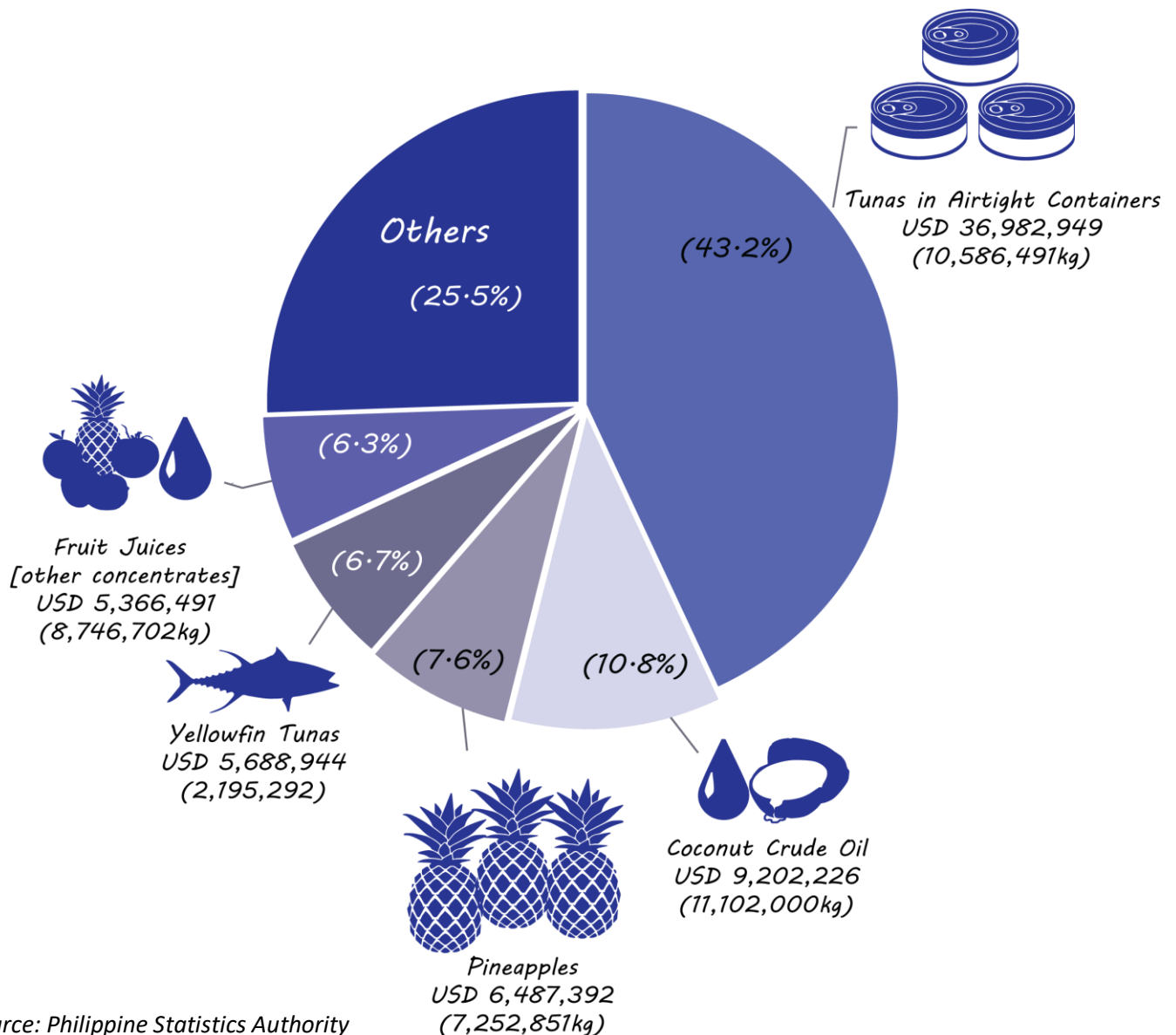
Source: Philippine Statistics Authority



Export Goods

The top 5 export commodities in terms of FOB value comprised of *Tunas in airtight containers*, *Coconut Crude Oil*, *Pineapples*, *Yellowfin tuna (include frozen and excludes fish fillets)* and *Fruit Juices (other concentrates)*. With a gross weight of 10,586,491 kilograms, export sales for *Tuna* was recorded at US\$36,982,949 with a share of 43.2 percent. It was followed by *Coconut Crude Oil* at US\$9,202,226 (10.8%); *Pineapples*, US\$6,487,392 (7.6%); *Yellowfin Tunas*, US\$5,688,944 (6.7%); and *Fruit Juices*, US\$5,366,491 (6.3%).

Figure 3: Distribution of Top Five (5) Exported Commodities Based on FOB Value
SOCCSKSARGEN Region: September 2020



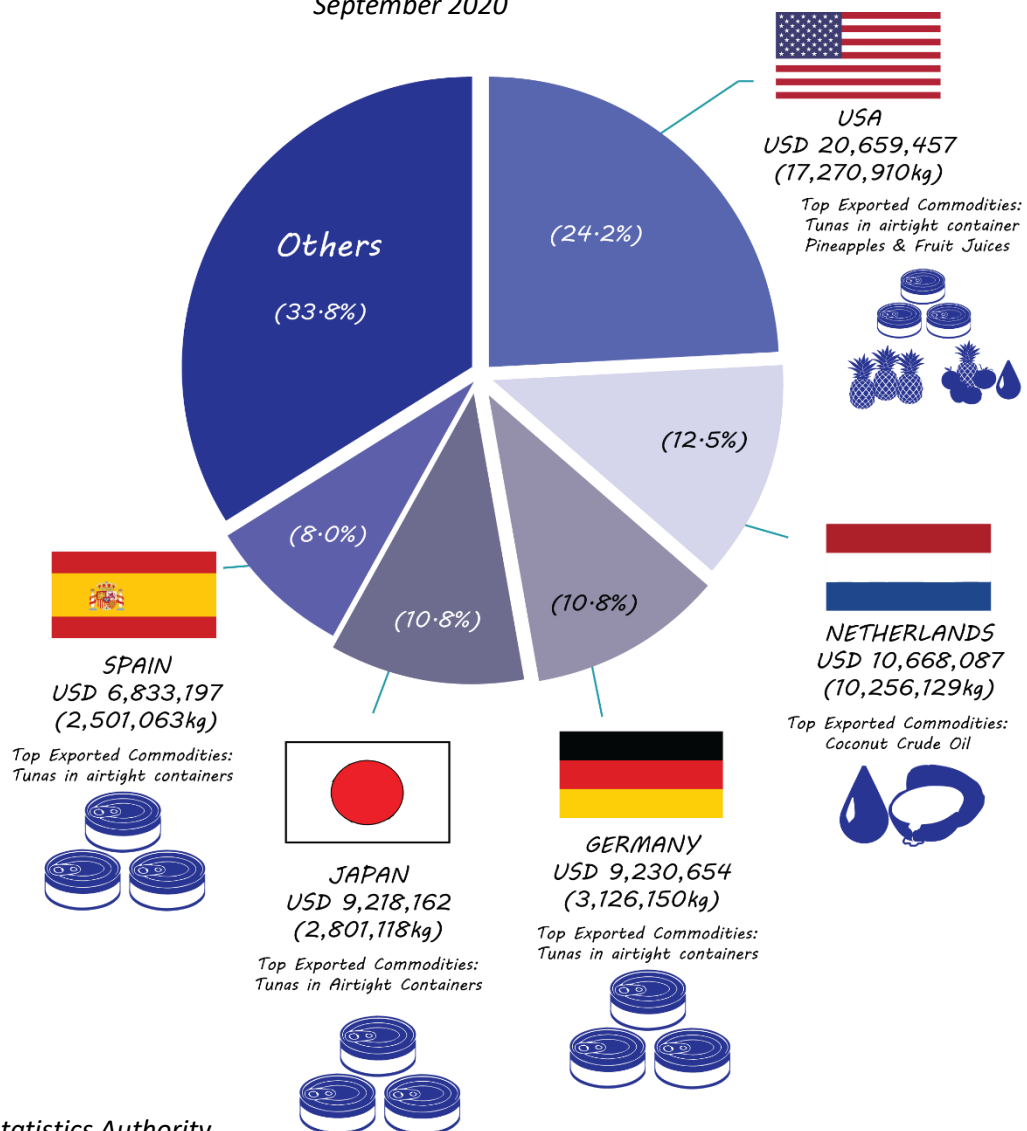
Source: Philippine Statistics Authority



The United States of America (USA) was the top destination of SOCCSKSARGEN Region’s export commodities at US\$20,659,457 weighing 17,270,910 kilograms and with a share of 24.2% to the total export value of the region. It was followed by Netherlands at US\$10,668,087 (12.5%); Germany at US\$9,230,654 (10.8%); Japan at US\$9,218,162 (10.8%); and Spain at US\$6,833,197 (8.0%).

The top commodities exported to USA include Tunas in airtight container, Pineapples and Fruit Juices (other concentrates). In Netherlands, Coconut Crude Oil; Germany, Japan, and Spain, Tunas in airtight containers.

Figure 4: Top Five (5) Destination Countries for SOCCSKSARGEN Region’s Exports Based on FOB Value September 2020



Source: Philippine Statistics Authority





REPUBLIC OF THE PHILIPPINES
PHILIPPINE STATISTICS AUTHORITY
SOCCSKSARGEN REGION

Approved for Release:

ATTY. MAQTAHAR L. MANULON, CESO V
Regional Director

For inquiries, please contact:

MA. EILEEN A. BERDEPRADO/CYREX BOY V. QUITIOL
Statistical Operations and Coordination Division, PSA-RSSO XII
Telephone Number (064) 557-2416



4/F CYMCI Building, Don Rufino Alonzo St., Cotabato City 9600
Telefax: (064) 421-2827, Telephone: (064) 557-2416
E-mail: psadose@gmail.com
<https://rsso12.psa.gov.ph>