



SPECIAL RELEASE

VOLUME AND VALUE OF IMPORTED AND EXPORTED GOODS, SOCCSKSARGEN REGION: OCTOBER 2019

Date of Release: 26 February 2020
Reference No. R12-SR2020-006

Merchandise Trade

Export sales of SOCCSKSARGEN Region in October 2019 was valued at US\$95,557,823.00, an increase of 39.4 percent from US\$68,561,620.00 recorded in October 2018. Total volume of export goods reached 82,560,984.67 kilograms during the month under review from 58,184,015.06 kilograms a year ago.

Import payments reached US\$65,678,524.00 in October 2019, up by 56.8 percent from US\$41,882,883.00 during the same period in 2018. Imported goods totalled to 67,880,013 kilograms from 151,076,027 kilograms the previous year.

Table 1: Growth Rate and Value of Imported and Exported Goods,
SOCCSKSARGEN Region: October 2018 and 2019

	Exports		Imports	
	October 2019	October 2018	October 2019	October 2018
Free-on-Board Value	95,557,823.00	68,561,620.00	65,678,524.00	41,882,883.00
Year-on-year Growth Rate	39.4%		56.8%	

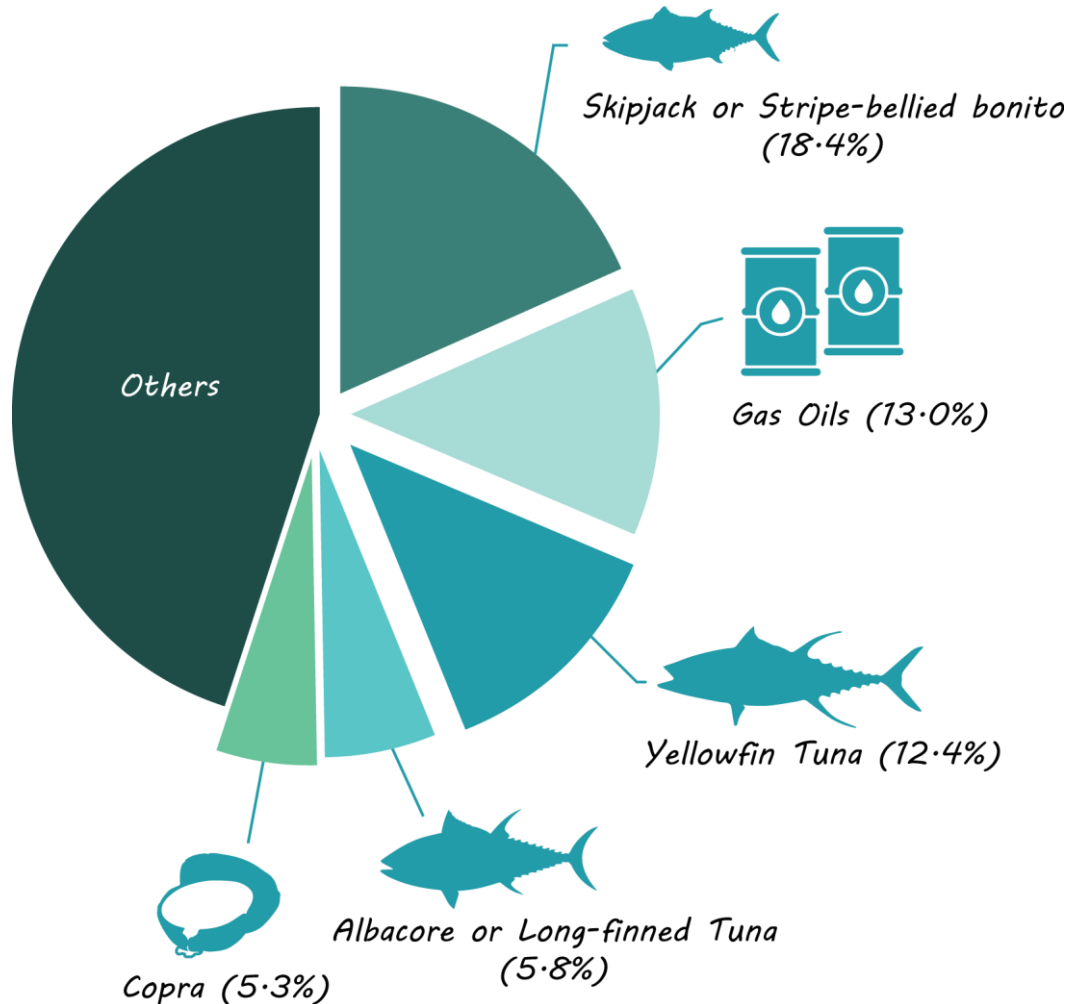
Source: Philippine Statistics Authority

Import Goods

The top 5 imported commodities based on their FOB value for the month under review include *Skipjack or stripe-bellied bonito* at US\$12,050,608.00, constituting 18.4 percent; *Gas and Oils* (US\$8,555,795.00), 13.0 percent; *Yellowfin Tuna* (US\$8,130,845.00), 12.4 percent; *Albacore or Long-finned Tuna* (US\$3,780,442.00), 5.8 percent; and *Copra* (US\$3,485,370.00), 5.3 percent.



Figure 1: Distribution of Top Five (5) Imported Commodities Based on FOB Value, SOCCSKSARGEN Region: October 2019



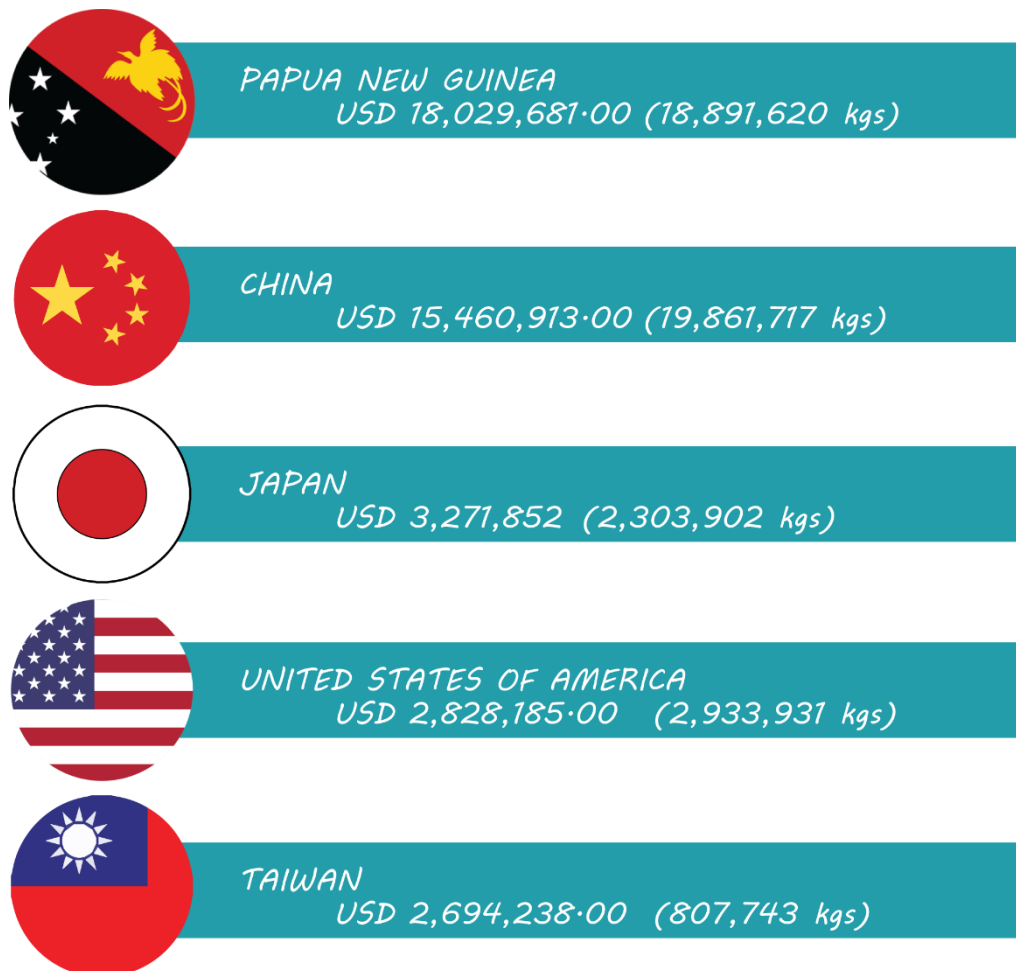
Source: Philippine Statistics Authority

In terms of volume, the top 5 imported commodities include Gas Oils, (15,232,304 kilograms); Copra, (9,359,768 kilograms); Yellowfin Tuna, (5,843,112 kilograms); Wheat and Meslin used as feed, (2,542,550 kilograms); and Fishing Vessels (Of a gross tonnage exceeding 1,000 but not exceeding 4,000) , (2,436,000 kilograms).

Import payments to *Papua New Guinea* totalled to US\$18,029,681.00 which accounted for 27.4 percent of the total value of goods imported by SOCCSKSARGEN Region in October 2019. *China* was next at US\$15,460,913; *Japan*, US\$3,271,852; *USA*, US\$2,933,931; and *Taiwan*, US\$2,964,238.

The top import goods from *Papua New Guinea* in terms of value include *Skipjack or stripe-bellied bonito* and *Yellowfin Tuna*. From *China*, *Gas Oils*; *Japan*, *Other bars and rods of stainless steel*; *USA*, *Oil-cake and other solid residues*; and *Taiwan*, *Albacore or longfinned tunas*.

Figure 2: Top Five (5) Source Countries for SOCCSKSARGEN Region's Imports,
Based on FOB Value: October 2019

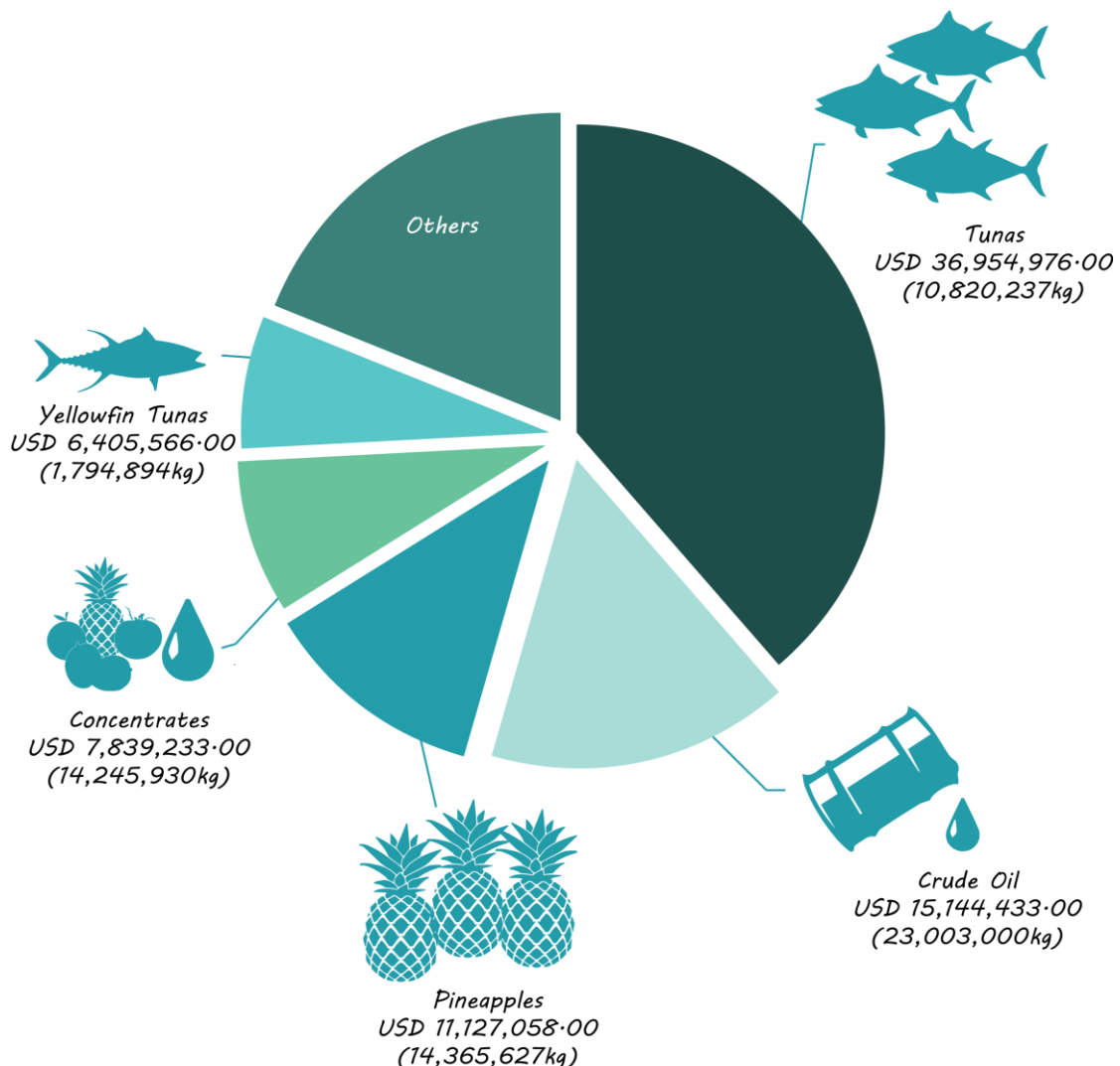


Source: Philippine Statistics Authority

Export Goods

The top 5 export commodities in terms of FOB value include Tunas (*in airtight containers*), *Crude Oil*, *Pineapples*, *Concentrates* and *Yellowfin tuna (include frozen and excludes fish fillets)*. Export sales for *Tuna* reached US\$36,954,976.00 with a gross weight of 10,820,237 kilograms. It was followed by *Crude Oil* at US\$15,144,433.00; *Pineapples*, US\$11,127,058.00; *Concentrates*, US\$7,839,233.00; and *Yellowfin Tunas*, US\$6,405,566.00.

Figure 3: Distribution of Top Five (5) Exported Commodities Based on FOB Value
SOCCKSARGEN Region: October 2019

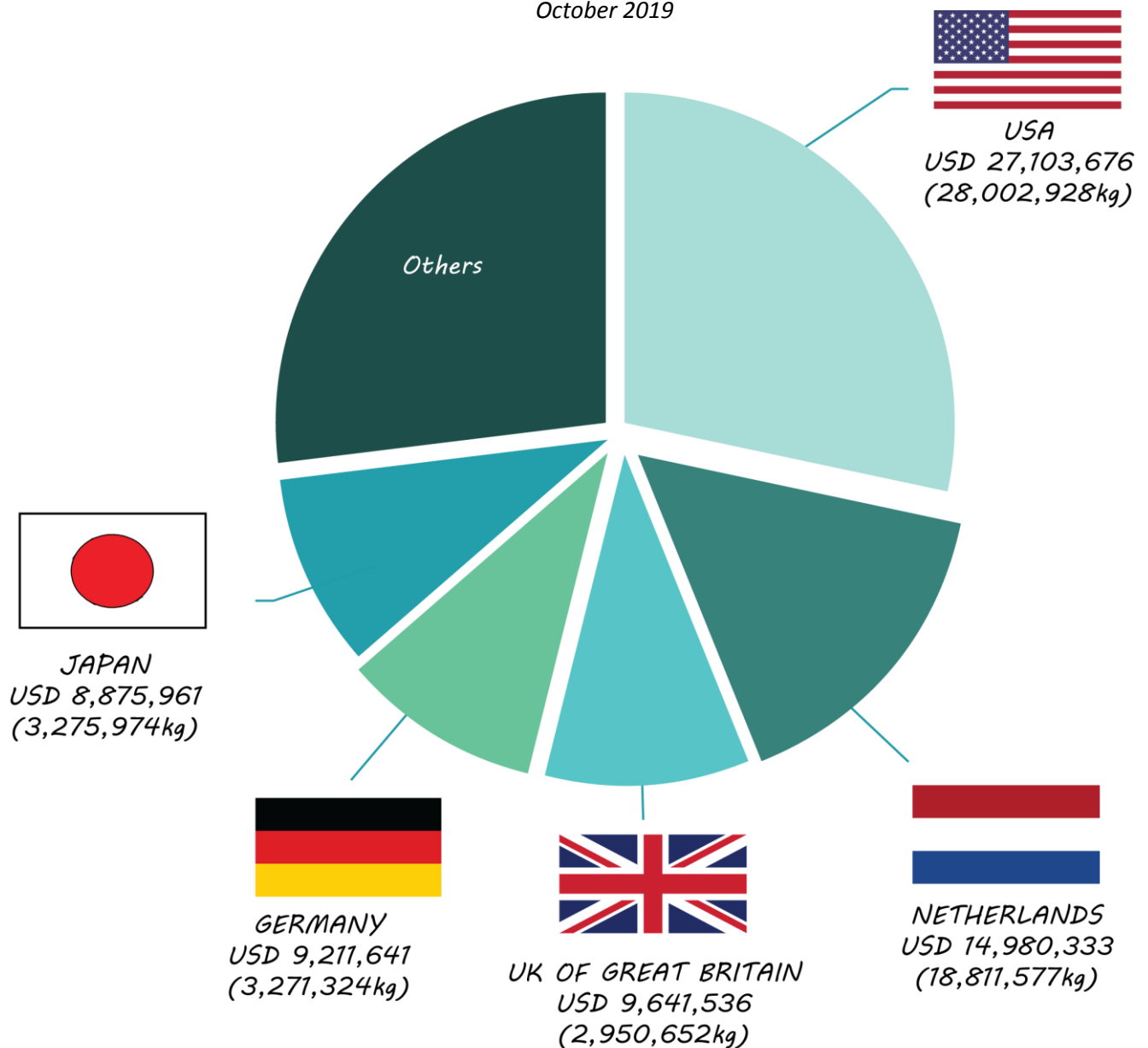


Source: Philippine Statistics Authority

At US\$27,103,676, the *United States of America* (USA) is the top destination of SOCCSKSARGEN Region’s export goods weighing 28,002,928 kilograms. Netherlands was next at US\$14,980,333.00; United Kingdom (UK), US\$9,641,536.00; Germany, US\$9,211,641; and *Japan*, US\$8,875,961.00.

The top commodities exported to USA include Pineapples, Fruit and Vegetable Juices (Concentrates), and Tunas. In Netherlands, Crude Oil; UK; Coconut Concentrates; Germany; Coconut (Desiccated); and Japan, Yellowfin Tunas.

Figure 4: Top Five (5) Destination Countries for SOCCSKSARGEN Region’s Exports Based on FOB Value October 2019



Source: Philippine Statistics Authority



REPUBLIC OF THE PHILIPPINES
PHILIPPINE STATISTICS AUTHORITY
SOCCSKSARGEN REGION

Explanatory Notes

Export and import trade statistics are compiled by the Philippine Statistics Authority (PSA) from export and import documents submitted to the Bureau of Customs (BOC) by exporters and importers or their authorized representatives as required by law. The PSA regularly collects these documents, which are as follows:

1. Export Declaration (ED – DTI form);
2. Import Entry and Internal Revenue Declaration (BOC IEIRD Form 236);
3. Informal Import Declaration and Entry (BOC Form 177); and
4. Single Administrative Documents (SAD)

The digitized copies of all documents are provided by BOC and PEZA to PSA on a monthly basis through email.

The output of the Automated Export Documentation System (AEDS) of the BOC is being utilized to generate export statistics. AEDS is a paperless transaction in lieu of the manual filling up of export documents.

Moreover, an electronic copy of the IEIRD, or SAD, is utilized to capture the monthly import figures. SAD-IEIRD is an on-line submission of import documents either by brokers or companies. These are transactions that pass through the Automated Cargo Operating System (ACOS), now called the e2m (electronic to mobile) customs system, which is implemented through the BOC e-Customs Project.

All documents (hard copies and e-files) received within the cut-off date, which is every 25th day of the month, are compiled, processed, summarized, analyzed and disseminated through monthly statistical tables and press releases. Processing includes coding, editing, review and validation of results.

Approved for Release:



ENGR. BELINDA R. PENUELA
OIC-Regional Director

For inquiries, please contact:

MA. EILEEN A. BERDEPRADO/CYREX BOY V. QUITIOL
Statistical Operations and Coordination Division, PSA-RSSO XII
Telephone Number (064) 557-2416



2/F Elena V. Co Building, Don Rufino Alonzo St., Cotabato City 9600
Telefax: (064) 421-2827, Telephone: (064) 557-2416
E-mail: psadose@gmail.com
<https://rso12.psa.gov.ph>