



SPECIAL RELEASE

VOLUME AND VALUE OF IMPORTED AND EXPORTED GOODS, SOCCSKSARGEN REGION: DECEMBER 2020

Date of Release: 28 MAY 2021
Reference No. R12-SR2021- 025

Merchandise Trade

SOCCSKSARGEN Region's export income amounting to US\$52,778,966.00 dropped by 34.9 percent in December 2020 from US\$81,023,610.00 in December 2019. The total volume of export commodities decreased to 53,344,957 kilograms in 2020 from 158,110,445 kilograms the same month in 2019.

Import expenditures went down by 18.9 percent to US\$47,395,122.00 in 2020 from US\$58,444,724.00 the same month of 2019. Imported goods weighed 196,938,684 kilograms in 2020 from 192,778,026 kilograms in 2019.

Table 1: Volume and Value of Imported and Exported Goods,
SOCCSKSARGEN Region: December 2019 and 2020

	Imports		Exports	
	December 2020	December 2019	December 2020	December 2019
Free-on-Board (FOB) Value (in USD)	47,395,122.00	58,444,724.00	52,778,966.00	81,023,610.00
Year-on-year Growth Rate	-18.9%		-34.9%	
Volume (in kilograms)	196,938,684	192,778,026	53,344,957	158,110,445
Year-on-year Growth Rate	2.2%		-66.3%	

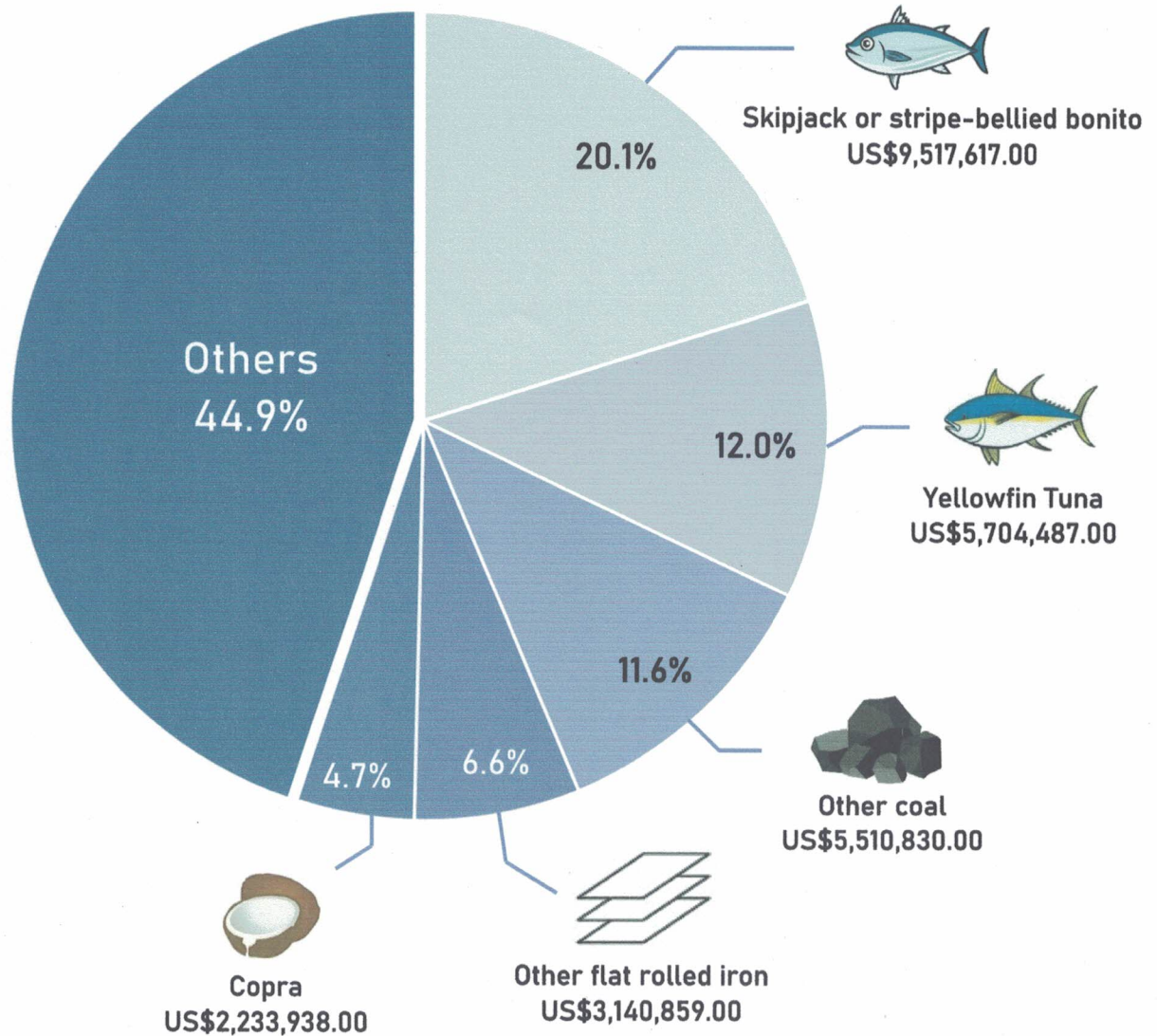
Source: Philippine Statistics Authority

Import Goods

Among the import commodities, *Skipjack or stripe-bellied bonito* accounted for the highest share at 20.1 percent in the overall payments in terms of Free-On-Board (FOB) value at US\$9,517,617.00. *Yellowfin Tuna* followed at US\$5,704,487.00 (12.0%), followed by *Other Coal* at US\$5,510,830.00 (11.6%), *Other Flat-rolled products of iron or non-alloy steel, of a width of 600 mm or more, clad, plated or coated* at US\$3,140,859.00 (6.6%), and *Copra* at US\$2,233,938.00 (4.7%).



Figure 1: Distribution of Top Five (5) Imported Commodities Based on FOB Value, SOCCSKSARGEN Region: December 2020



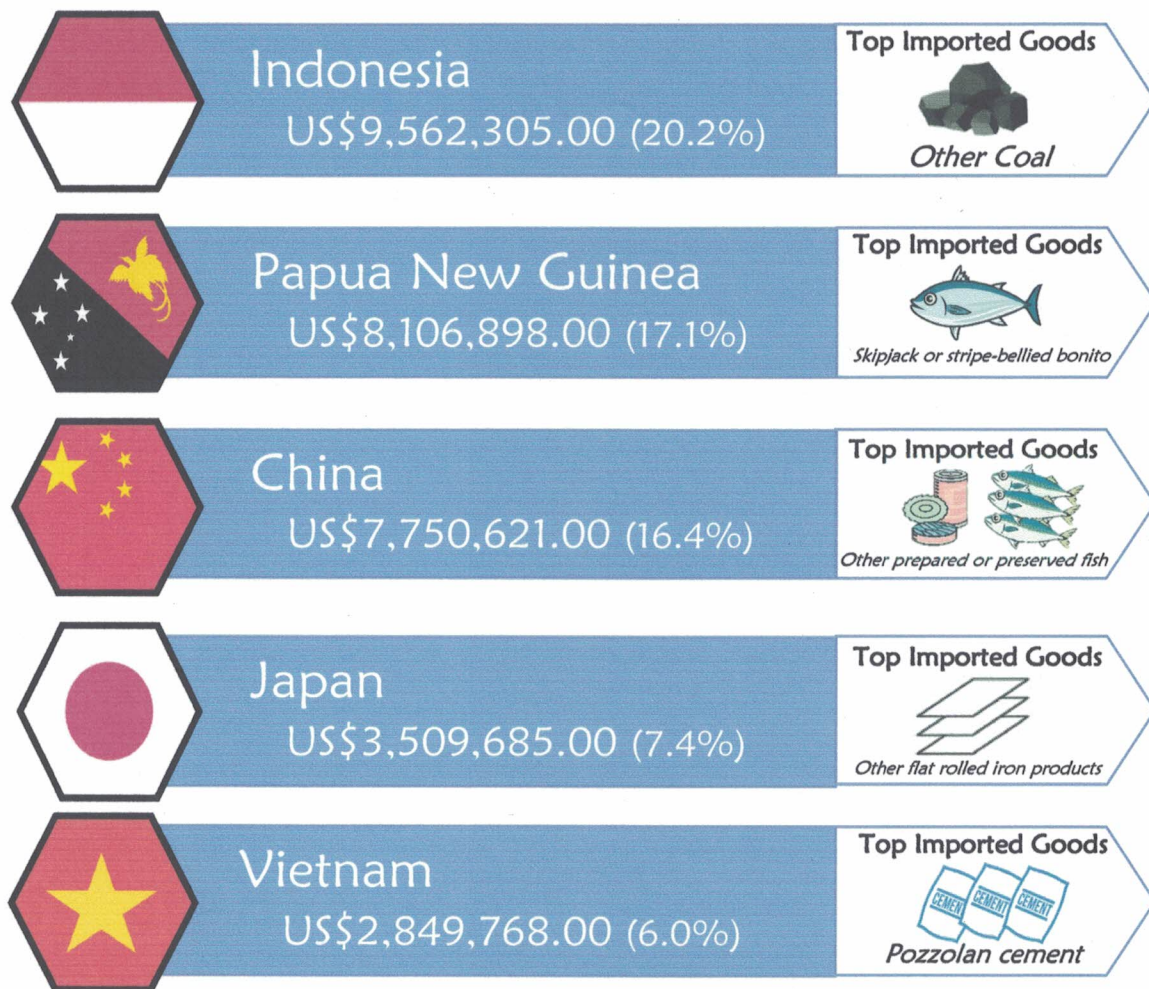
Source: Philippine Statistics Authority

Imports by Country of Origin

Indonesia was the region's biggest import supplier amounting to US\$9,562,305.00 accounting for 20.2 percent of the total import value of the region, followed by Papua New Guinea at US\$8,106,898.00 (17.1%); China at US\$7,750,621.00 (16.4%); Japan at US\$3,509,685.00 (7.4%); and Vietnam at US\$2,849,768.00 (6.0%).

In terms of FOB value, the top import goods from *Indonesia* were *Other Coal*. From *Papua New Guinea*, *Skipjack or striped-bellied bonito*; *China*, *Other Prepared or Preserved Fish*; *Japan*, *Other flat-rolled iron products*; and *Vietnam*, *Pozzolan cement and blended pozzolan cement* (Figure 2).

Figure 2: Top Five (5) Source Countries for SOCCSKSARGEN Region's Imports, Based on FOB Value: December 2020

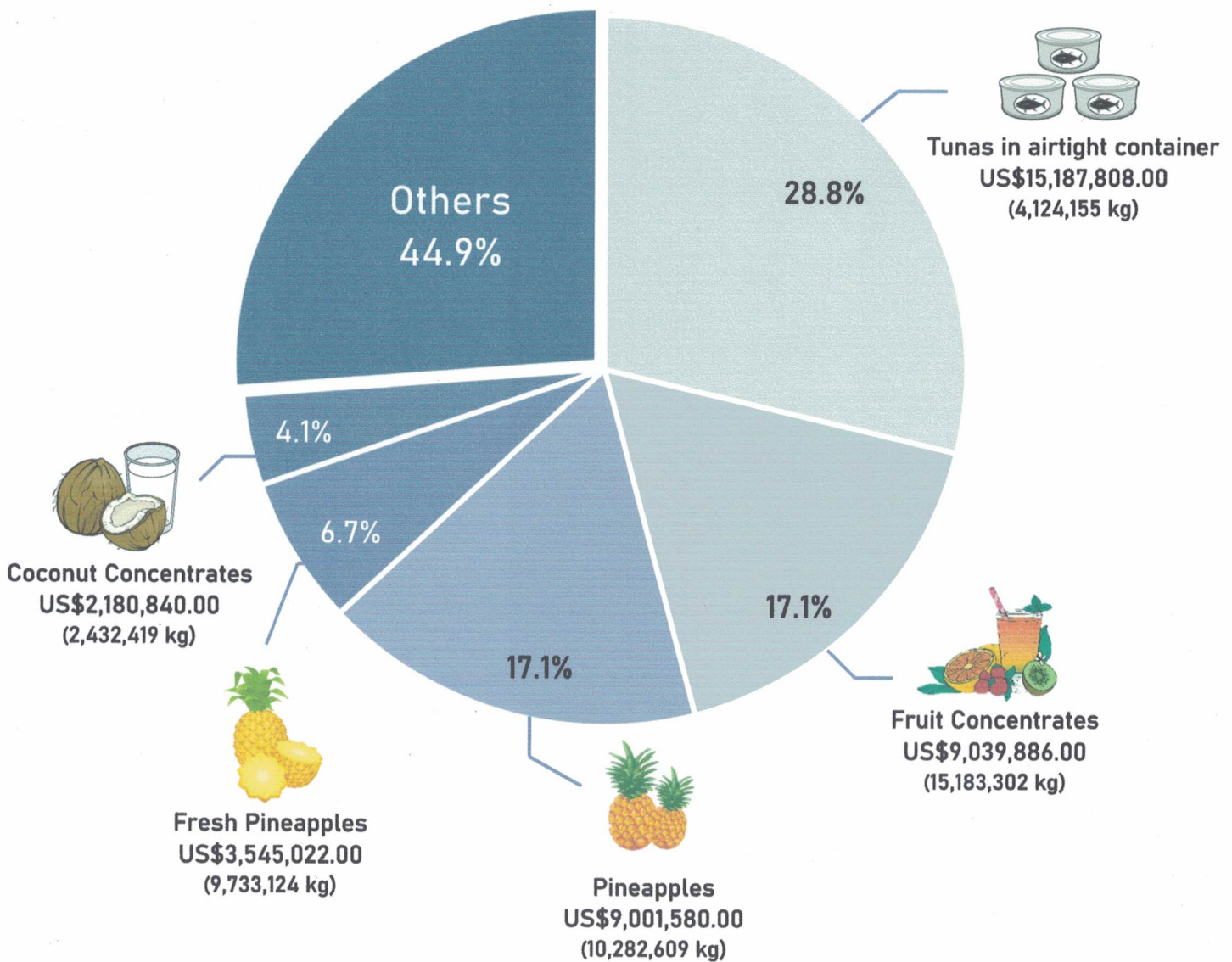


Source: Philippine Statistics Authority

Export Goods

The top 5 export commodities in terms of FOB value are *Tunas in airtight container*, *Fruit Juices (Concentrates)*, *Pineapples*, *Fresh Pineapples* and *Coconut Concentrates*. With a gross weight of 4,124,155 kilograms, export sales for *Tuna* were recorded at US\$15,187,808.00 (28.8%), followed by *Fruit Juices (Concentrates)* at US\$9,039,886.00 (17.1%); *Pineapples*, US\$9,001,580.00 (17.1%); *Fresh Pineapples*, US\$3,545,022.00 (6.7%); and, *Coconut Concentrates* US\$2,180,840.00 (4.1%) (Figure 3).

Figure 3: Distribution of Top Five (5) Exported Commodities Based on FOB Value
SOCCSKSARGEN Region: November 2020



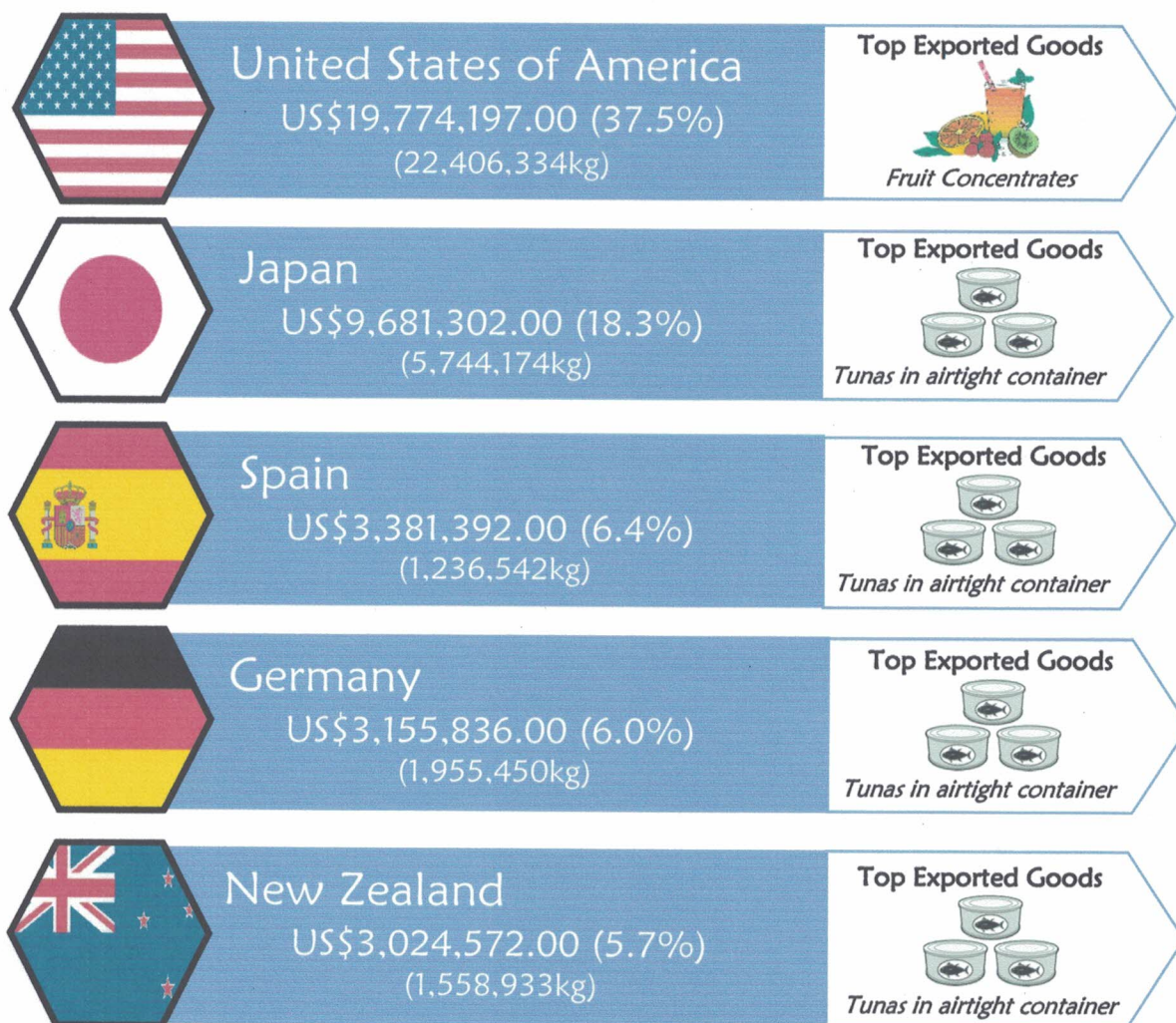
Source: Philippine Statistics Authority

Exports by Country of Destination

United States of America was the top destination of SOCCSKSARGEN Region's export commodities at US\$19,774,197.00 weighing 22,406,334 kilograms and with a share of 37.5%, followed by *Japan* at US\$9,681,302.00 (18.3%); *Spain* at US\$3,381,392.00 (6.4%); *Germany* at US\$3,155,836.00 (6.0%); and *New Zealand* at US\$3,024,572.00 (5.7%).

The top commodities exported to the USA include Fruit Juices (other concentrates). Tunas in airtight container were the top exported goods in Japan, Spain, Germany, and New Zealand.

Figure 4: Top Five (5) Destination Countries for SOCCSKSARGEN Region's Exports Based on FOB Value November 2020



Source: Philippine Statistics Authority



Republic of the Philippines
Philippine Statistics Authority
SOCCSKSARGEN REGION

Approved for Release:

ATTY. MAQTAHAR L. MANULON, CESO V
Regional Director

For inquiries, please contact:

MA. EILEEN A. BERDEPRADO/NORJAHNA M. HADJINOR
Statistical Operations and Coordination Division, PSA-RSSO XII
Telephone Number (064) 557-2416



4/F CYMCI Building, Don Rufino Alonzo St., Cotabato City 9600
Telefax: (064) 421-2827, Telephone: (064) 557-2416
E-mail: psadose@gmail.com
<https://rso12.psa.gov.ph>