



REPUBLIC OF THE PHILIPPINES
PHILIPPINE STATISTICS AUTHORITY
SOCCSKSARGEN REGION

SPECIAL RELEASE

VOLUME AND VALUE OF IMPORTED AND EXPORTED GOODS, SOCCSKSARGEN REGION: FEBRUARY 2020

Date of Release: 18 JUNE 2020
Reference No. R12-SR2020-040

Merchandise Trade

SOCCSKSARGEN Region's export income in February 2020 went up by 91.7 percent at US\$87,484,986 from US\$45,639,379 in February 2019. The total volume of export commodities weighed 69,052,672 kilograms during the month under review from 93,638,357 kilograms recorded in the same month of the previous year.

Import expenditures, at US\$39,219,506, went down by 21.6 percent from US\$50,042,021 in the same month of 2019. Imported goods reached a total of 141,349,769 kilograms from 99,983,406 kilograms in February 2019.

Table 1: Volume and Value of Imported and Exported Goods,
SOCCSKSARGEN Region: January 2019 and 2020

	Imports		Exports	
	February 2020	February 2019	February 2020	February 2019
Free-on-Board (FOB) Value (in USD)	39,219,506	50,042,021	87,484,986	45,639,379
Year-on-year Growth Rate	-21.6%		91.7%	
Volume (in kilograms)	141,349,769	99,983,406	69,052,672	27,280,530
Year-on-year Growth Rate	41.4%		153.1%	

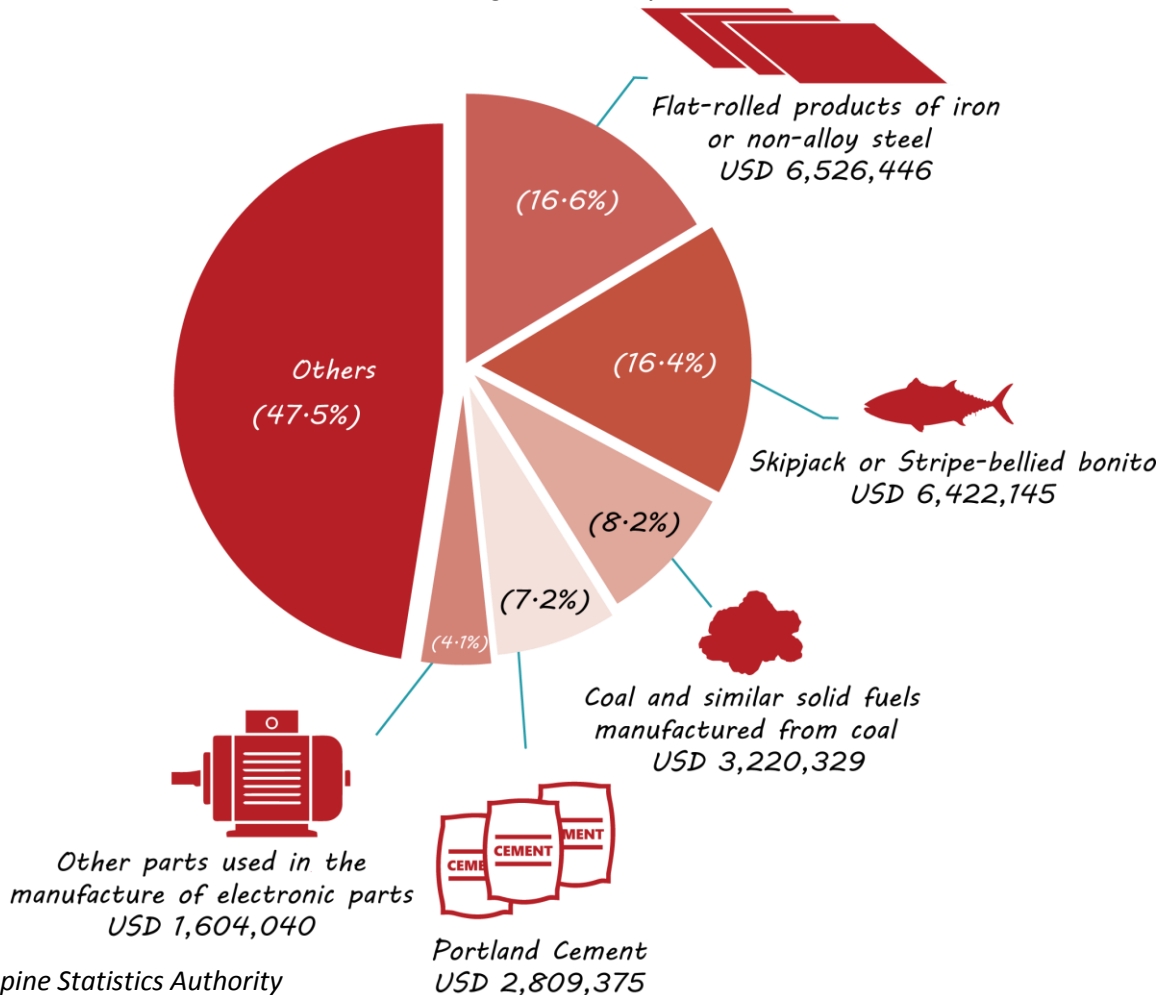
Source: Philippine Statistics Authority

Import Goods

Flat-rolled products of iron or non-alloy steel was the highest imported commodity in terms of Free-On-Board (FOB) value in SOCCSKSARGEN Region in February 2020 at US\$6,526,446 accounting for 16.6 percent of the total imports expenditures. *Skipjack* followed at 16.4%, (US\$6,422,145); *Coal [briquettes, ovoids and similar solid fuels manufactured from coal]*, (US\$3,220,329) at 8.2 percent; *Portland cement, aluminous cement, slag cement, supersulphate cement and similar hydraulic cements [whether or not coloured or in the form of clinkers]*, (US\$2,809,375) at 7.2 percent; and *Other parts used in the manufacture of electric motors*, (US\$1,604,040) at 4.1 percent.



Figure 1: Distribution of Top Five (5) Imported Commodities Based on FOB Value, SOCCSKSARGEN Region: February 2020



Source: Philippine Statistics Authority

The top 5 imported commodities based on volume include *Other Coal [briquettes, ovoids and similar solid fuels manufactured from coal]*, (61,105,838 kilograms); *Portland cement, aluminous cement, slag cement, supersulphate cement and similar hydraulic cements [whether or not coloured or in the form of clinkers]*, (50,138,450 kilograms); *Flat-rolled products of iron or non-alloy steel*, (6,653,243 kilograms); *Skipjack or stripe-bellied bonito*, (5,998,530 kilograms); and *Rice [Not more than 5% broken]*, (2,489,269 kilograms).

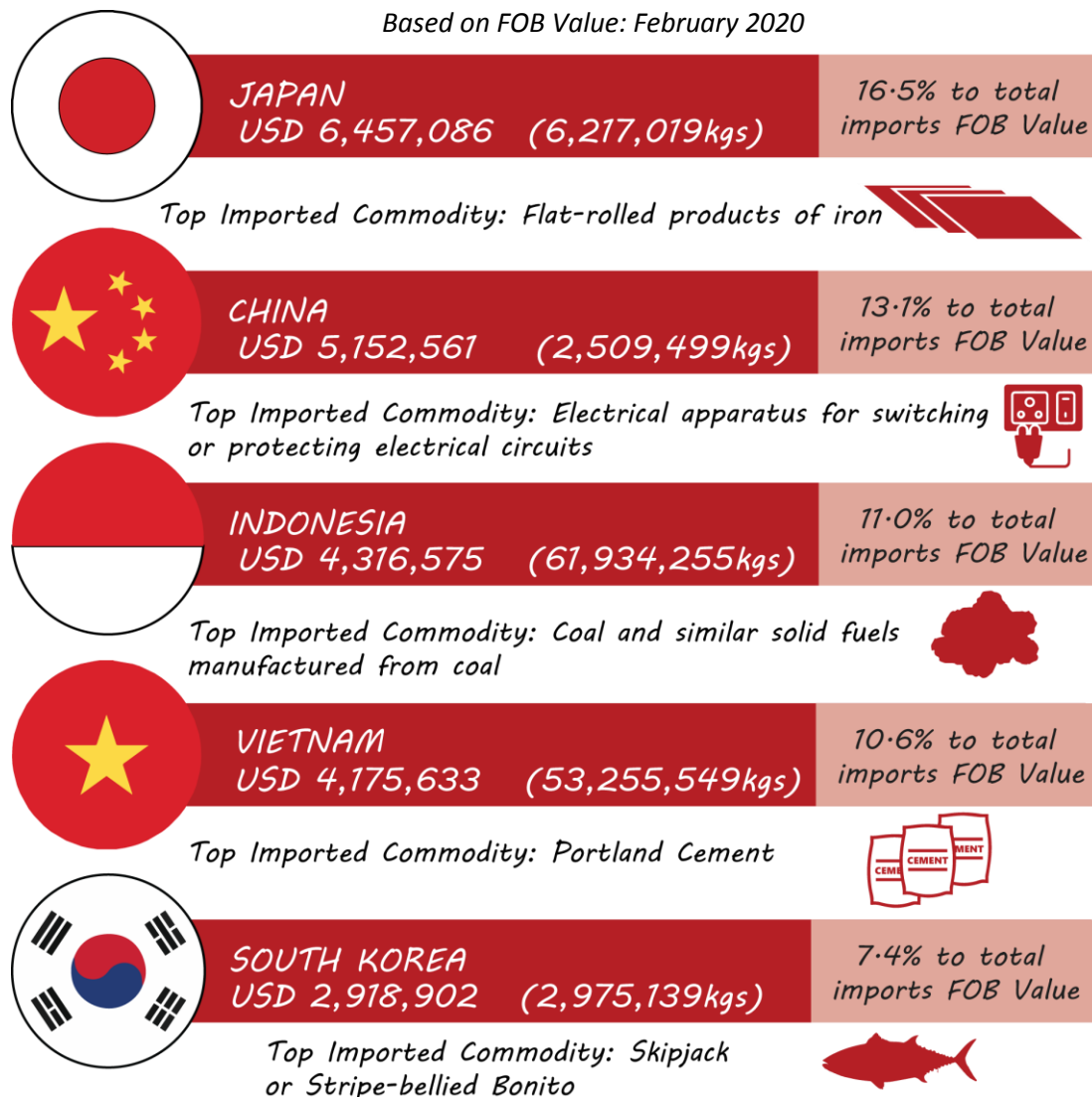
Table 2: Top 5 Imported Commodities Based on Volume

Imported Commodities	Volume (in Kilograms)
<i>Other Coal [briquettes, ovoids and similar solid fuels manufactured from coal]</i>	61,105,838
<i>Portland cement, aluminous cement, slag cement, supersulphate cement and similar hydraulic cements [whether or not coloured or in the form of clinkers]</i>	50,138,450
<i>Flat-rolled products of iron or non-alloy steel</i>	6,653,243
<i>Skipjack or stripe-bellied bonito</i>	5,998,530
<i>Rice [Not more than 5% broken]</i>	2,489,269

Japan was the region's biggest supplier of imported goods amounting to US\$6,457,086 in February 2020 accounting for 16.5% of the total import value of the region. China was second at US\$5,152,561 (13.1%); Indonesia at US\$4,316,575 (11.0%); Vietnam at US\$4,175,633 (10.6%); and Korea at US\$2,918,902 (7.4%).

The top import goods from *Japan* in terms of FOB value include *Flat-rolled products of iron* and *Skipjack or Stripe-bellied bonito*. From *China*, *Electrical apparatus for switching or protecting electrical circuits*; *Indonesia*, *Coal and similar solid fuels manufactured from coal*; *Vietnam*, *Portland Cement*, and *South Korea*, *Skipjack or Stripe-bellied bonito*.

Figure 2: Top Five (5) Source Countries for SOCCSKSARGEN Region's Imports, Based on FOB Value: February 2020

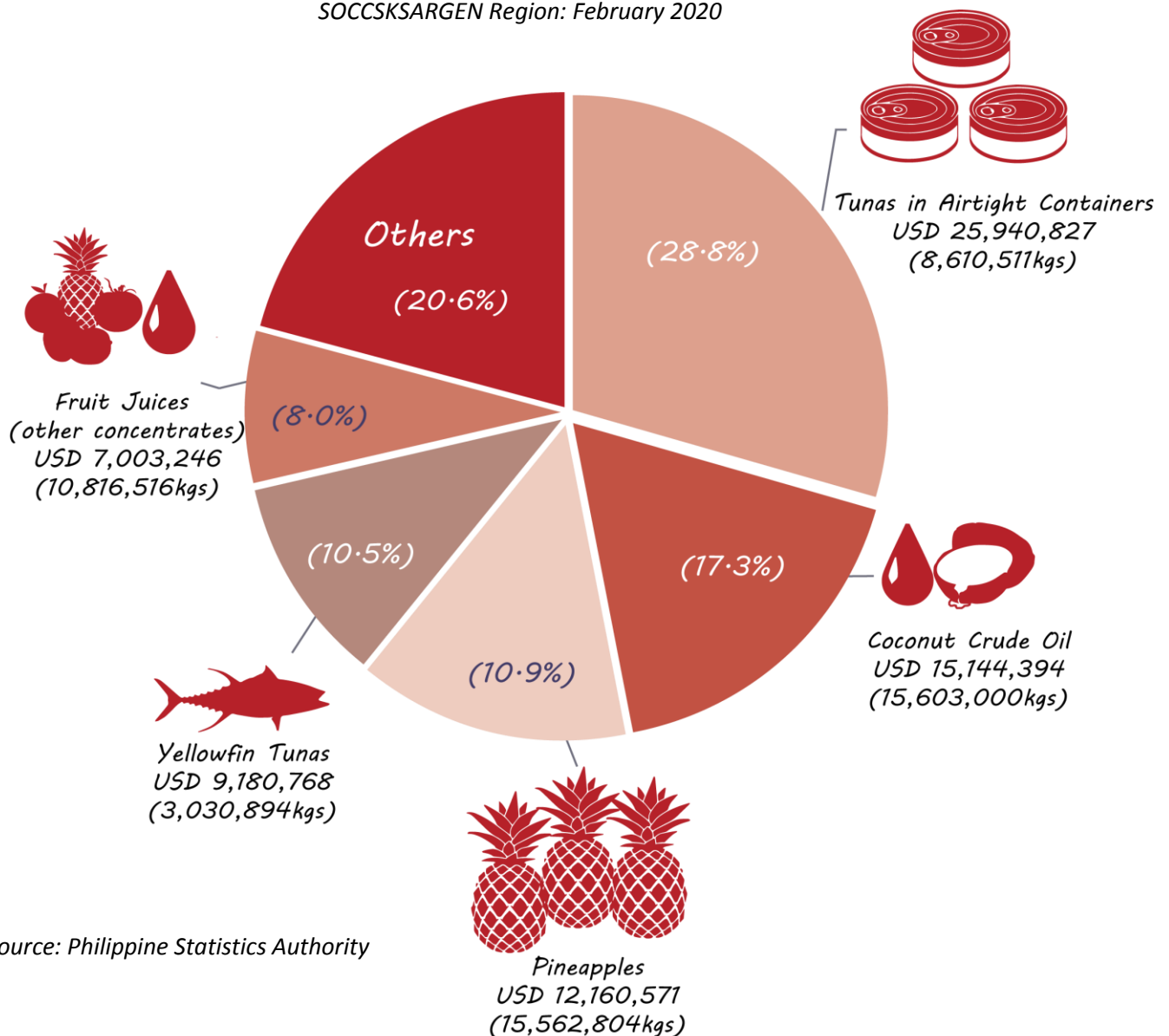


Source: Philippine Statistics Authority

Export Goods

The top 5 export commodities in terms of FOB value comprised of *Tunas in airtight containers*, *Coconut Crude Oil*, *Pineapples*, *Yellowfin tuna (include frozen and excludes fish fillets)* and *Fruit Juices (other concentrates)*. With a gross weight of 8,610,511 kilograms, Export sales for *Tuna* was recorded at US\$25,940,827. It was followed by *Coconut Crude Oil* at US\$15,144,394; *Pineapples*, US\$12,160,571; *Yellowfin Tunas*, US\$9,180,768 and *Fruit Juices (other concentrates)*, US\$7,003,246.

Figure 3: Distribution of Top Five (5) Exported Commodities Based on FOB Value
SOCCKSARGEN Region: February 2020

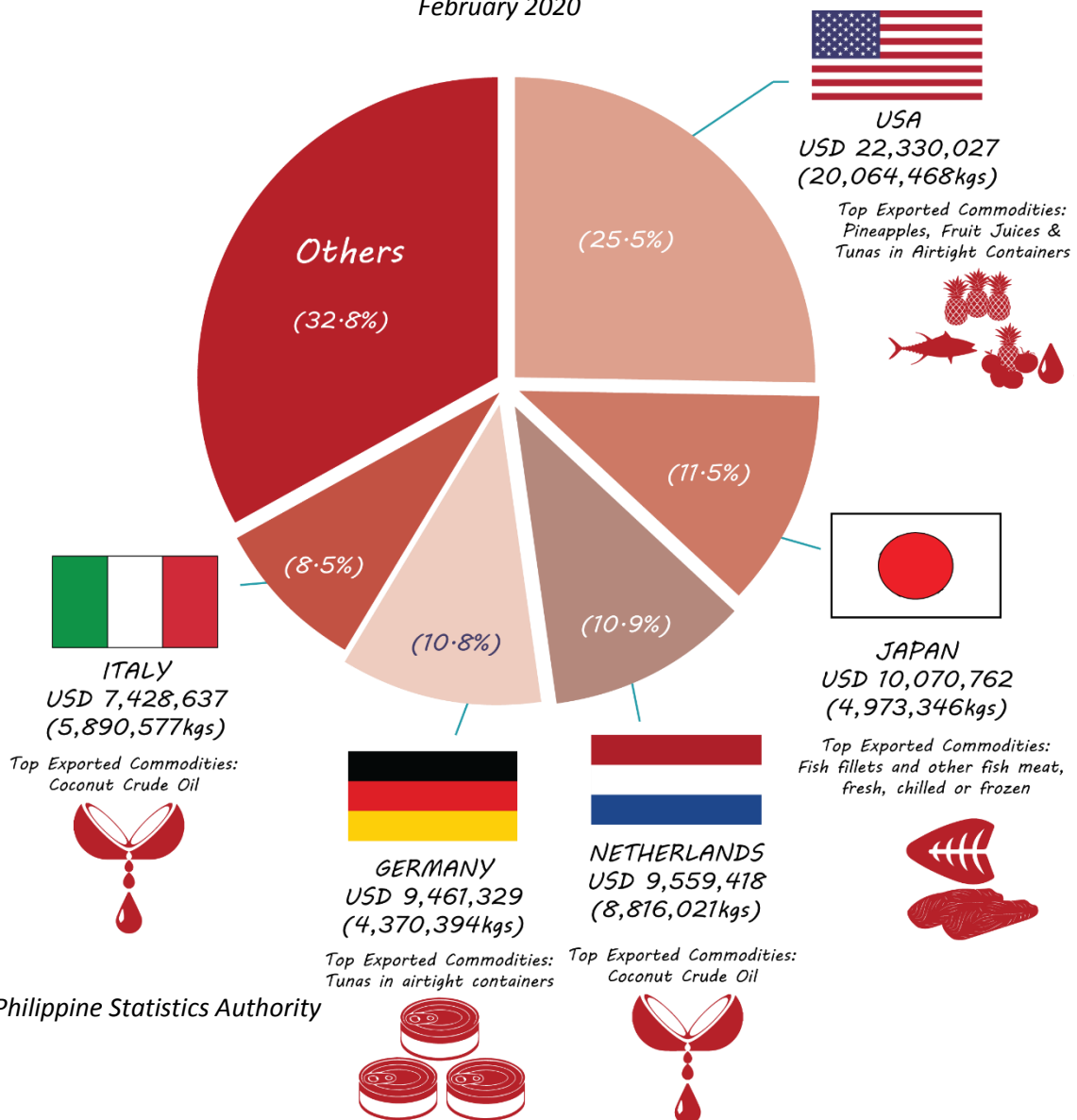


Source: Philippine Statistics Authority

The United States of America (USA) was the top destination of SOCCSKSARGEN Region’s export commodities at US\$22,330,027 weighing 20,064,468 kilograms and with a share of 25.5% to the total export value of the region. It was followed by Japan at US\$10,070,762 (11.5%); Netherlands at US\$9,559,418 (10.9%); Germany at US\$9,461,329 (10.8%); and Italy at US\$7,428,637 (8.5%).

The top commodities exported to USA include Pineapples, Fruit Juices (other concentrates) and Yellowfin Tunas. In Japan, Fish fillets and other fish meat (whether or not minced), fresh, chilled or frozen; Netherlands, Coconut Crude Oil; Germany, Tunas in airtight containers and Italy, Coconut Crude Oil.

Figure 4: Top Five (5) Destination Countries for SOCCSKSARGEN Region’s Exports Based on FOB Value February 2020



Source: Philippine Statistics Authority



REPUBLIC OF THE PHILIPPINES
PHILIPPINE STATISTICS AUTHORITY
SOCCSKSARGEN REGION

Approved for Release:

ENGR. BELINDA R. PENUELA
OIC-Regional Director

For inquiries, please contact:

MA. EILEEN A. BERDEPRADO/CYREX BOY V. QUITIOL
Statistical Operations and Coordination Division, PSA-RSSO XII
Telephone Number (064) 557-2416



2/F Elena V. Co Building, Don Rufino Alonzo St., Cotabato City 9600
Telefax: (064) 421-2827, Telephone: (064) 557-2416
E-mail: psadose@gmail.com
<https://rsso12.psa.gov.ph>